

RNP APCH - GPS.

▼

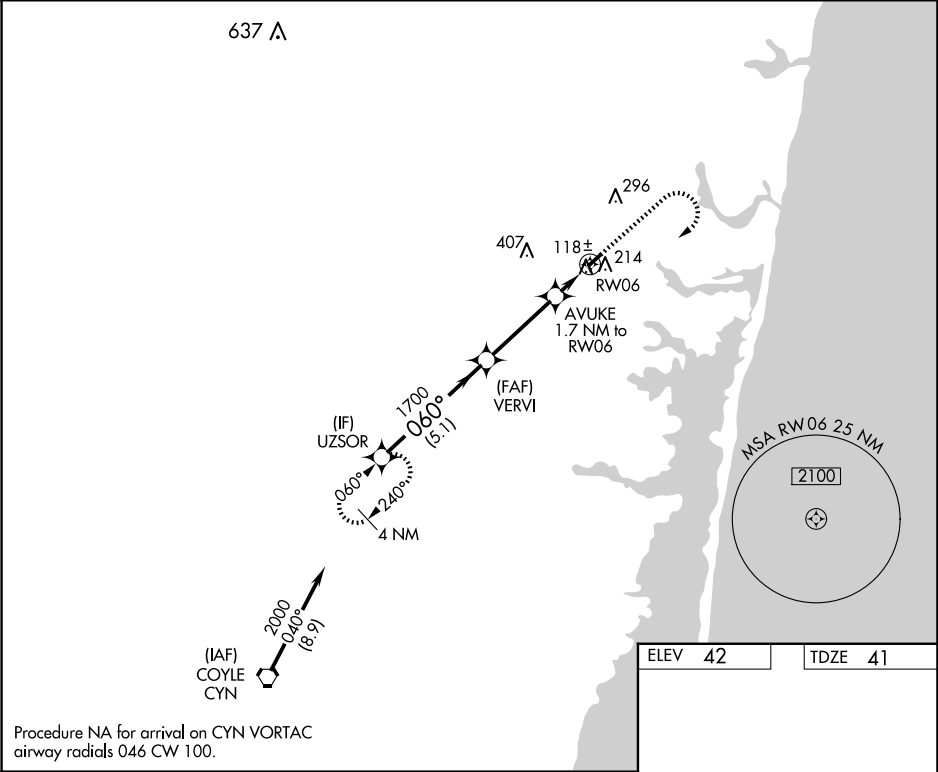
NA

Circling Rwy 24 NA at night.

Rwy 6 helicopter visibility reduction below ¾ SM NA.

MISSED APPROACH: Climb to 1000 then climbing right turn to 2000 direct UZSOR and hold.

AWOS-AV 122.8	MC GUIRE APP CON 126.475 363.8	GCO 121.725	UNICOM 122.8 (CTAF)
-------------------------	--	-----------------------	-------------------------------



VGSI and descent angles not coincident
(VGSI Angle 3.00°/TCH 15).

1000

2000

UZSOR

2000 060° 1700 3.00° TCH 40 620 1 NM to RW06 1 NM to RW06

CATEGORY	A	B	C	D
LP MDA	380-1	339 (400-1)		NA
LNNAV MDA	580-1	539 (600-1)		NA
CIRCLING	580-1 538 (600-1)	620-1 578 (600-1)		NA

MIRL Rwy 6-24

REIL Rwy 6 and 24