

APP CRS	Rwy Idg	2987
240°	TDZE	42
	Apt Elev	42

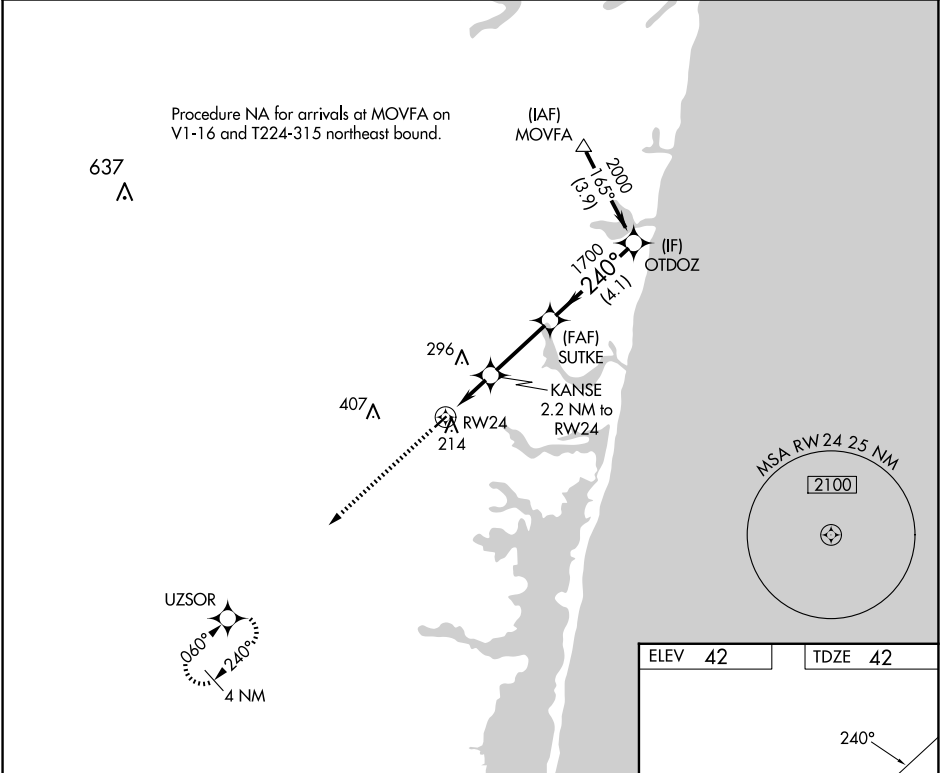
RNAV (GPS) RWY 24



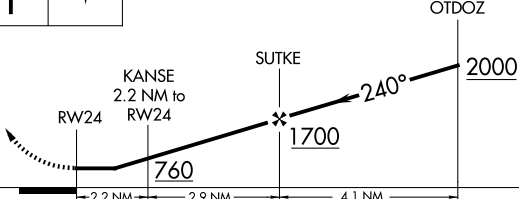

LAKEWOOD (N12)

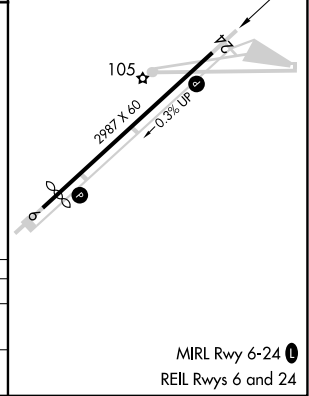
RNP APCH - GPS.
<div><div>▼</div><div>NA</div></div> <div>Rwy 24 helicopter visibility reduction below 1 SM NA. Straight-in Rwy 24 NA at night, Circling Rwy 24 NA at night.</div>

MISSED APPROACH: Climb to 2000 direct UZSOR and hold.

AWOS-AV 122.8	MC GUIRE APP CON 126,475 363,8	GCO 121.725	UNICOM 122.8 (CTAF) 0
------------------	-----------------------------------	----------------	--------------------------



2000	UZSOR	Visual Segment - Obstacles.			
					
					
CATEGORY		A	B	C	D
LNAV MDA		520-1 478 (500-1)		NA	
 CIRCLING		540-1 498 (500-1)	620-1 578 (600-1)	NA	



NE-2, 10 JUL 2025 to 07 AUG 2025

NE-2, 10 JUL 2025 to 07 AUG 2025