

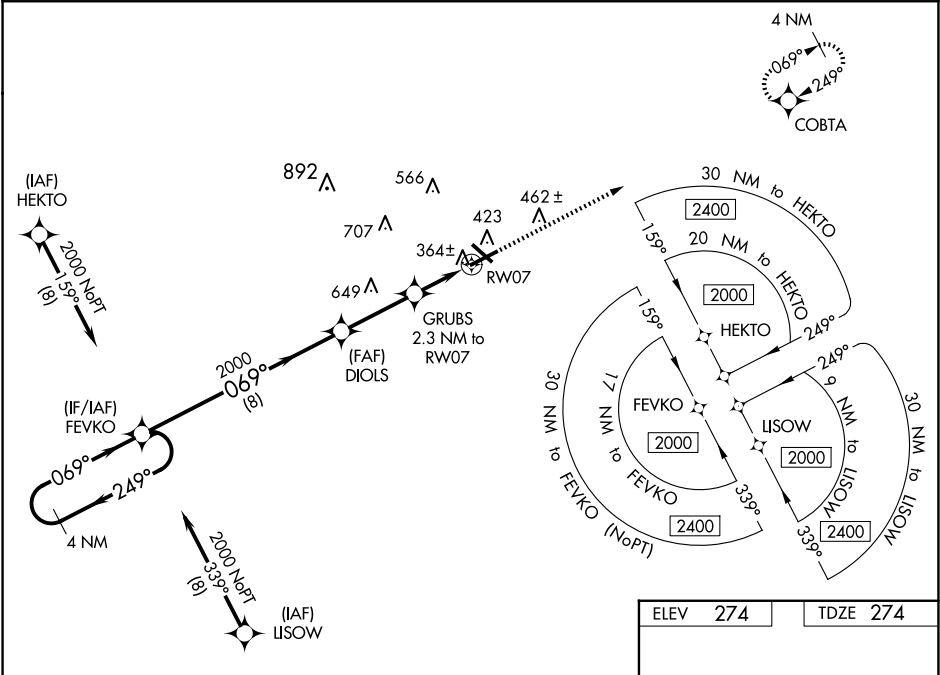
WAAS CH 66037 W07A	APP CRS 069°	Rwy Ldg TDZE Apt Elev 6002 274 274
----------------------------------------	------------------------	------------------------------------------------------------------------

RNAV (GPS) RWY 7
VIDALIA RGNL (VDI)

⚠ For uncompensated Baro-VNAV systems, LNAV/VNAV NA below -15°C (5°F) or above 54°C (130°F). DME/DME RNP-0.3 NA. When local altimeter setting not received, use Baxley altimeter setting and increase all DA 77 feet and all MDA 80 feet, increase LPV and LNAV/VNAV all Cnts visibility ¼ mile, LNAV and Circling Cnts C/D visibility ¼ mile. VDP and Baro-VNAV NA when using Baxley altimeter setting. Night Landing: Rwy 32 NA. Helicopter visibility reduction below ¾ SM NA.

MISSED APPROACH:
Climb to 2000 direct COBTA and hold.

AWOS-3 119.925	JACKSONVILLE CENTER 127.575 269.025	UNICOM 122.8 (CTAF) ①
--------------------------	-----------------------------------------------	---------------------------------



VGSI and RNAV descent angles not coincident (VGSI Angle 3.00/TCH 41).

4 NM Holding Pattern

FEVKO

DIOLS

GRUBS 2.3 NM to RWY 07

RWY 07

2000

1060

GP 3.00° TCH 60

8 NM

2.9 NM

1.3 NM

1 NM

2000

COBTA

*LNNAV only.

*1 NM to RWY 07

CATEGORY	A	B	C	D
LPV DA		524-¾	250 (300-¾)	
LNAV/VNAV DA		527-¾	253 (300-¾)	
LNAV MDA		620-1	346 (400-1)	
C CIRCLING	740-1	466 (500-1)	920-1¾ 646 (700-1¾)	1060-2½ 786 (800-2½)

ELEV 274

TDZE 274

HIRL Rwy 7-25 ①

REIL Rwy 7 ①