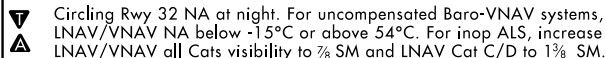
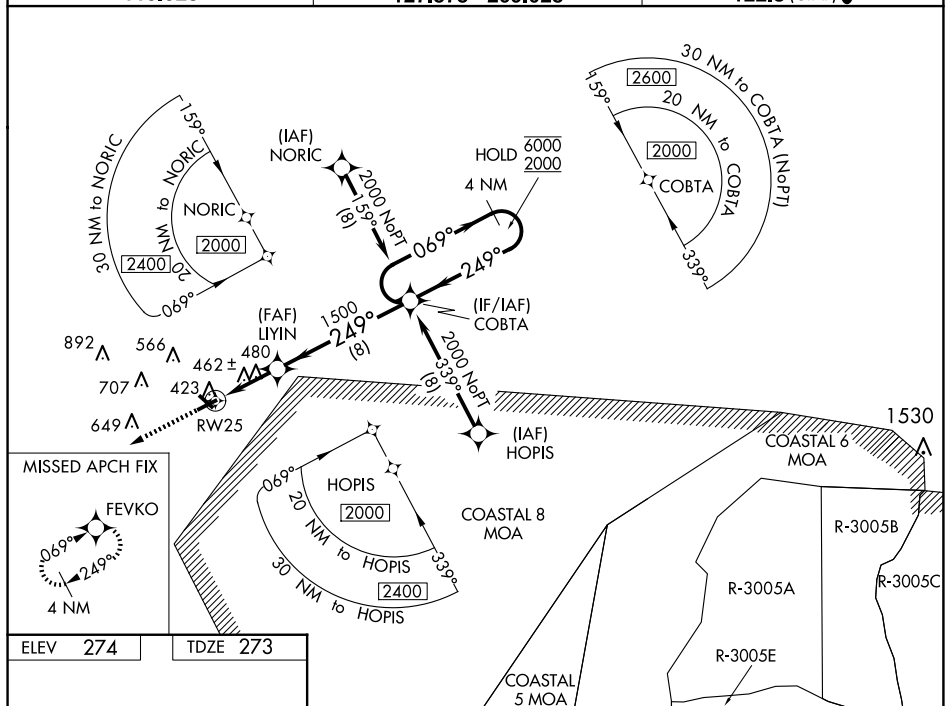
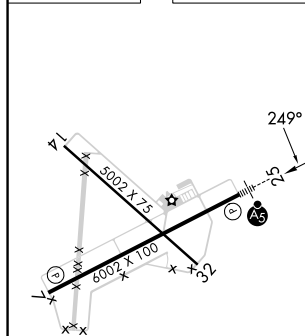


RNAV (GPS) RWY 25
VIDALIA RGNL (VDI)

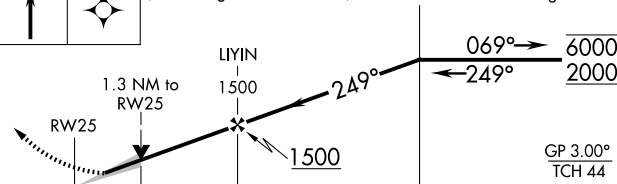
MISSED APPROACH:
Climb to 2000 direct
FEVKO and hold.

UNICOM
122.8 (CTAF) **L**

ELEV	274		TDZE	273
------	-----	--	------	-----



2000	FEVKO	VGSI and RNAV glidepath not coincident (VGSI Angle 3.00/TCH 48). COBTA	4 NM Holding Pattern
------	-------	--	----------------------



CATEGORY	A	B	C	D
LPV DA	473-1/2 200 (200-1/2)			
RNAV/DA	584-1/2 311 (400-1/2)			
RNAV MDA	740-1/2 467 (500-1/2)		740-1 467 (500-1)	
CIRCLING	740-1 466 (500-1)		920-1 3/4 646 (700-1 3/4)	1060-2 1/2 786 (800-2 1/2)

SE-4, 10 JUL 2025 to 07 AUG 2025

SE-4, 10 JUL 2025 to 07 AUG 2025