

WAAS CH 81927 W07A	APP CRS 073°	Rwy Idg TDZE Apt Elev	4491 730 730
--	------------------------	-----------------------------	---

RNAV (GPS) RWY 7

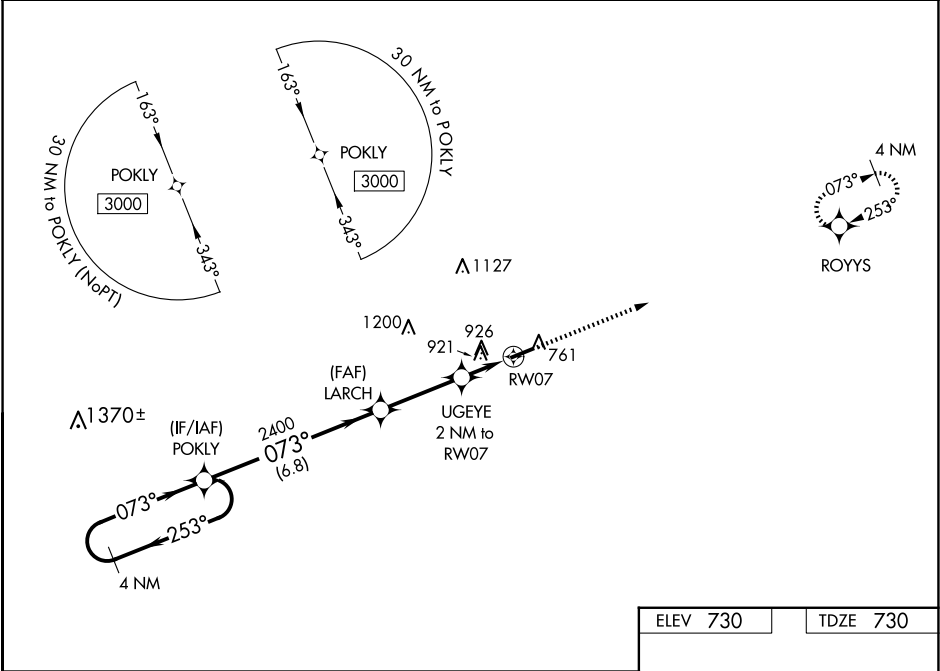
WILLIAMS COUNTY (ØG6)

▼
ΔNA

Baro-VNAV NA. When VGSI inop, Straight-in/Circling Rwy 7 procedure NA at night. DME/DME RNP-0.3 NA. Visibility reduction by helicopters NA. Use Defiance Meml altimeter setting; when not received, use De Kalb County altimeter setting; increase LPV DA to 1063 and all visibilities ¼ SM, LNAV/VNAV DA to 1300 and all visibilities ¼ SM; increase all MDAs 60 feet and LNAV and Circling visibility Cats C/D ¼ SM.

MISSED APPROACH:
Climb to 3000 direct
ROYYS and hold.

DFI ASOS 121.425	TOLEDO APP CON 134.35 307.0	UNICOM 122.8 (CTAF)	123.0
----------------------------	---------------------------------------	-------------------------------	--------------



4 NM Holding Pattern		POKLY		LARCH		UGEYE		RW07	
3000		253°		073°		2400		1400	
GP 3.00°		TCH 35		6.8 NM		3.1 NM		2 NM	
CATEGORY	A	B		C		D			
LPV DA	1003-1		273 (300-1)						
LNAV/VNAV DA	1240-1¾		510 (600-1¾)						
LNAV MDA	1260-1	530 (600-1)		1260-1½		530 (600-1½)			
CIRCLING	1300-1	570 (600-1)		1300-1½		1520-2½		790 (800-2½)	

ELEV 730 TDZE 730

3000 ROYYS

*LNAV only

UGEYE 2 NM to RW07

RW07

4782 X 75

073°

MIRL Rwy 7-25
REIL Rwys 7 and 25

EC-2, 10 JUL 2025 to 07 AUG 2025

EC-2, 10 JUL 2025 to 07 AUG 2025