

BRYAN, OHIO

AL-5604 (FAA)

23334

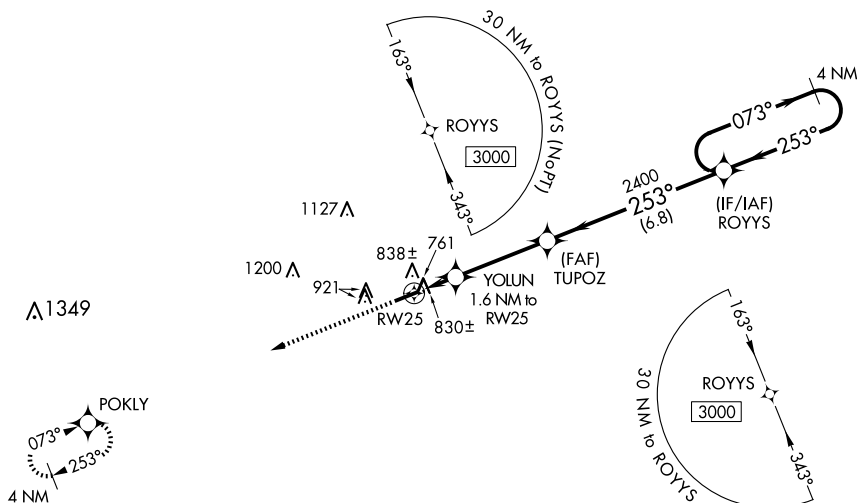
WAAS CH 40427 W25A	APP CRS 253°	Rwy Idg 4153 TDZE 730 Apt Elev 730
--	------------------------	---

RNAV (GPS) RWY 25

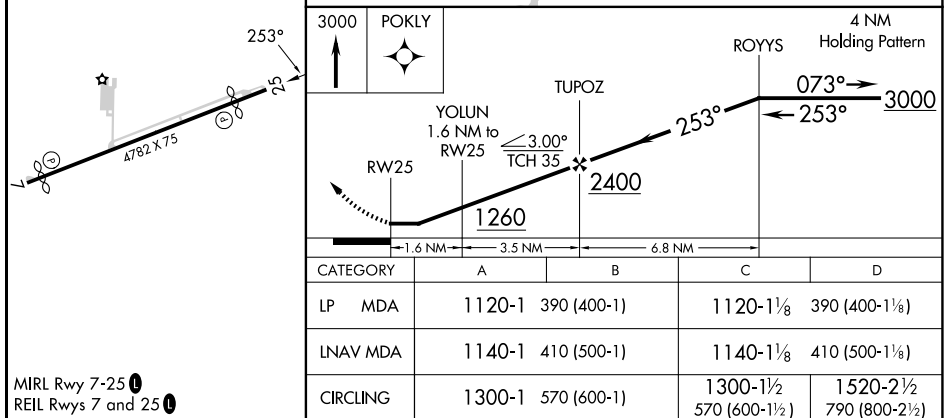
V When VGSI inop, Straight-in/Circling Rwy 25 procedure NA at night. DME/DME
A **NA** RNP-0.3 NA. Helicopter visibility reduction below 1 SM NA. Use Defiance Meml
altimeter setting; when not received, use De Kalb County altimeter setting: increase
all MDAs 60 feet and LP and LNAV and Circling visibility Cats C/D ¼ SM.

MISSED APPROACH:
Climb to 3000 direct
POKLY and hold.

DFI ASOS 121.425	TOLEDO APP CON 134.35 307.0	UNICOM 122.8 (CTAF)	123.0 0
----------------------------	---------------------------------------	-------------------------------	----------------



ELEV 730		TDZE 730
----------	--	----------



CATEGORY	A	B	C	D
LP MDA	1120-1 390 (400-1)		1120-1½ 390 (400-1½)	
LNAV MDA	1140-1 410 (500-1)		1140-1½ 410 (500-1½)	
CIRCLING	1300-1 570 (600-1)		1300-1½ 570 (600-1½)	1520-2½ 790 (800-2½)

BRYAN, OHIO

Amdt 1B 11AUG22

41°28'N - 84°30'W

WILLIAMS COUNTY (ØG6)
RNAV (GPS) RWY 25

EC-2, 10 JUL 2025 to 07 AUG 2025