

| | | |
|--|------------------------|---|
| WAAS CH 57925 W06A | APP CRS 059° | Rwy Idg 4201 TDZE 77 Apt Elev 81 |
|--|------------------------|---|

RNAV (GPS) RWY 6
BROOKHAVEN (HWV)

RNP APCH - GPS.

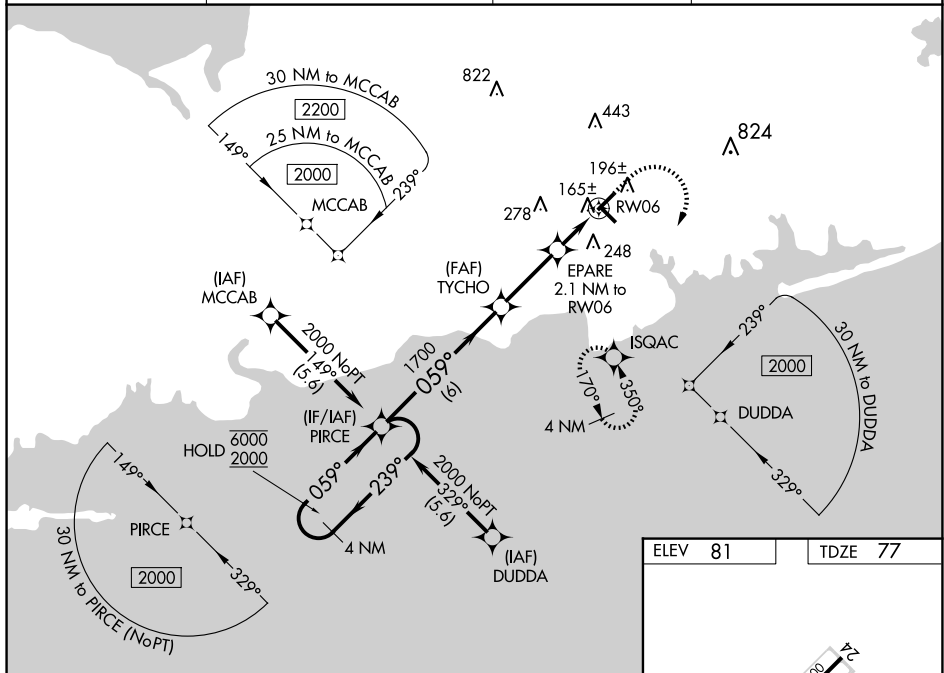
▼ For uncompensated Baro-VNAV systems, LNAV/VNAV NA below -15°C or above 54°C.
▲ Rwy 6 helicopter visibility reduction below 1 SM NA. Baro-VNAV and VDP NA when using ISP altimeter setting. When local altimeter setting not received, use ISP altimeter setting and increase LPV DA to 368 feet; increase LNAV/VNAV DA to 355 feet; increase all MDAs 40 feet. Inop table does not apply to LNAV/VNAV. For inop ALS, increase LPV all Cats visibility to ¾ SM, increase LNAV all Cats visibility to 1 SM. For inop ALS when using ISP altimeter setting, increase LPV and LNAV/VNAV all Cats visibility to ¾ SM, increase LNAV all Cats visibility to 1 SM. Circling Rwy 6, 15 NA at night.

MALSR



MISSED APPROACH:
Climb to 600 then
climbing right turn
to 2000 direct
JSQAC and hold.

| | | | |
|------------------------|--|---------------------------|---------------------------------|
| ASOS 119.625 | NEW YORK APP CON 120.05 343.75 | CLINC DEL 133.2 | UNICOM 122.8 (CTAF) 0 |
|------------------------|--|---------------------------|---------------------------------|



| | | |
|---------|--|---------|
| ELEV 81 | | TDZE 77 |
|---------|--|---------|

4 NM Holding Pattern

VGSI and RNAV glidepath not coincident (VGSI Angle 3.00°/TCH 47°).

600 2000 ISQAC

↑ ↗ ✦

EPARE 2.1 NM to RW06

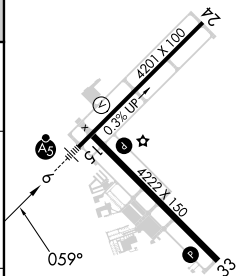
1 NM to RW06

RW06

6 NM 2.9 NM 1.2 1 NM

GP 3.00° TCH 51

| CATEGORY | A | B | C | D |
|---------------|----------------------------------|---|---|----|
| LPV DA | 340- ³ / ₄ | 263 (300- ³ / ₄) | | NA |
| RNAV/ VNAV DA | 327- ³ / ₄ | 250 (300- ³ / ₄) | | NA |
| RNAV MDA | 420- ³ / ₄ | 343 (400- ³ / ₄) | | NA |
| CIRCLING | 560-1 | 479 (500-1) | | NA |



REIL Rwy 15, 24 and 33 **L**
MIRL Rwy 6-24 and 15-33 **L**