

APP CRS  
**092°**

Rwy Idg  
TDZE  
Apt Elev

**4401**  
**796**  
**796**

RNAV (GPS) RWY 9

WABASH MUNI (IWH)

RNP APCH - GPS.

▼

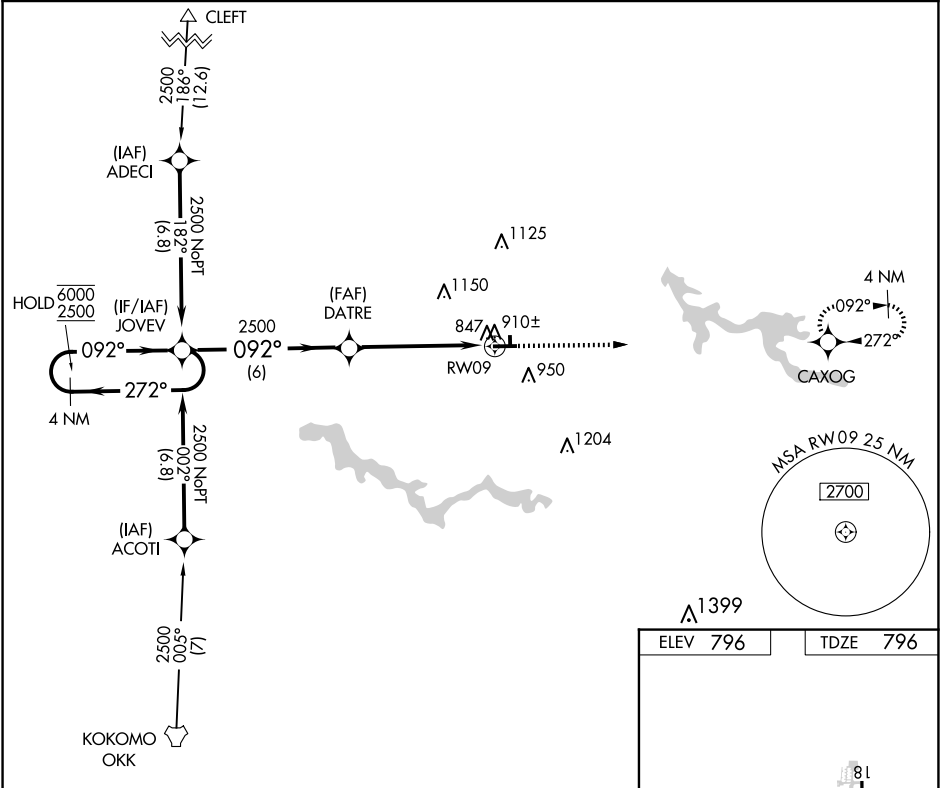
NA

Circling Rwy 9, 18, 36 NA at night. Rwy 9 helicopter visibility reduction below 1 SM NA.  
Use Kokomo altimeter setting; when not received, use Marion altimeter setting and increase all MDAs 40 feet and visibility LNAV Cat C ¼ SM.

MISSED APPROACH:

Climb to 2500 direct CAXOG and hold.

|                                |  |                                 |
|--------------------------------|--|---------------------------------|
| OKK AWOS-3PT<br><b>128.675</b> | GRISSOM APP CON ★<br><b>121.05 338.275</b> | UNICOM<br><b>122.8 (CTAF) 0</b> |
|--------------------------------|--|---------------------------------|



4 NM Holding Pattern

VGSI and descent angles not coincident (VGSI Angle 3.00/TCH 32).

2500 CAXOG

JOVEV

DATRE

RWY 09

6000 2500

272° 092°

2500

3.00° TCH 40

6 NM 5.2 NM

| CATEGORY | A                     | B                     | C                         | D  |
|----------|-----------------------|-----------------------|---------------------------|----|
| LNAV MDA | 1200-1                | 404 (500-1)           | 1200-1 ¼<br>404 (500-1 ¼) | NA |
| CIRCLING | 1260-1<br>464 (500-1) | 1340-1<br>544 (600-1) | 1540-2 ¼<br>744 (800-2 ¼) | NA |

URL Rwy 18-36

MIRL Rwy 9-27

REIL Rwy 9 and 27