

LOC I-LWB <u>110.35</u>	APP CRS 045°	Rwy Idg TDZE Apt Elev	7003 2288 2302
-----------------------------------	------------------------	-----------------------------	---

ILS or LOC RWY 4
GREENBRIER VALLEY (LWB)

RNAV 1-GPS required.
ADF or DME required for LOC only.

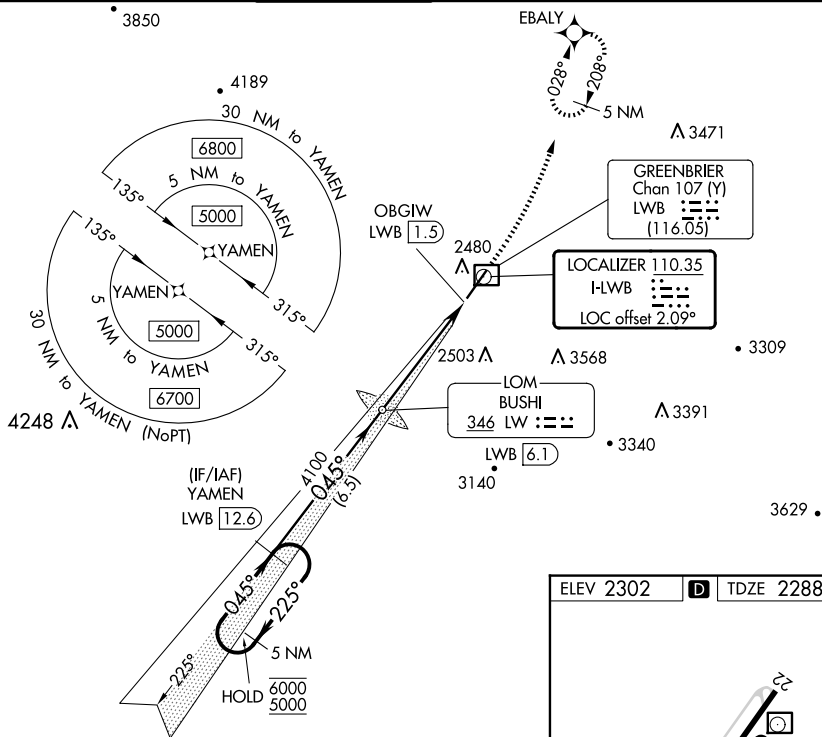
T Autopilot coupled approach NA below 2700. Rwy 4 helicopter visibility
A reduction below $\frac{3}{4}$ SM NA. For inop ALS increase S-ILS 4 all Cats
visibility to $\frac{7}{8}$ SM, increase S-LOC 4 Cats A/B to $1\frac{1}{8}$ SM.

MALSR



MISSED APPROACH: Climb to 4000 then climbing left turn to 6000 direct EBALY and hold, continue climb-in-hold to 6000.

ATIS 121.4	WASHINGTON CENTER 134.4 353.9	LEWISBURG TOWER★ 118.9 (CTAF) 0	GND CON 121.9	CLNC DEL 125.725 (When twr closed)	UNICOM 122.95
----------------------	---	---	-------------------------	---	-------------------------



YAMEN LWB 12.6
5 NM Holding Pattern

BUSHI LOM LWB 6.1

*LWB 2.3
*LOC only.

OBGIW LWB 1.5

GS 3.00°
TCH 51

Distances: 6.5 NM, 3.8 NM, 0.8 NM, 0.4 NM

CATEGORY	A	B	C	D
S-ILS 4		2559-¾	271 (300-¾)	
S-LOC 4		2720-¾	432 (500-¾)	
C CIRCLING	2840-1 538 (600-1)	3040-1 738 (800-1)	3280-3 978 (1000-3)	3680-3 1378 (1400-3)

