

WAAS CH 70704 W32A	APP CRS 318°	Rwy Idg 5425 TDZE 20 Apt Elev 20
--	------------------------	---

RNAV (GPS) RWY 32

APALACHICOLA RGNL-CLEVE RANDOLPH FLD (AAF)

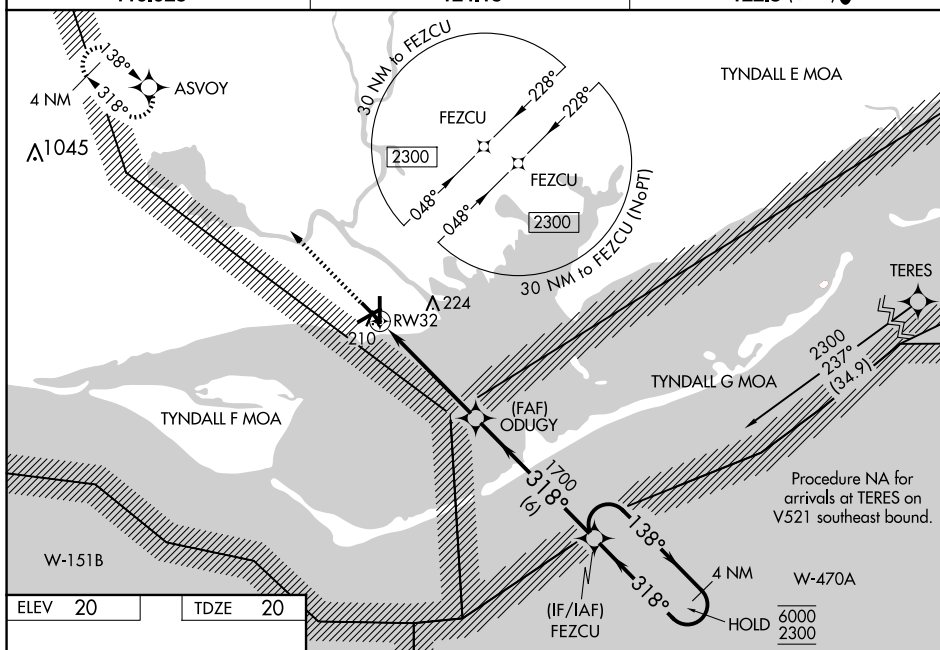
RNP APCH - GPS.

T Rwy 32 helicopter visibility reduction below 1 SM NA. Baro-VNAV NA when using Northwest Florida Beaches Intl altimeter setting. For uncompensated Baro-VNAV systems, LNAV/VNAV NA below -15°C or above 54°C. Straight-in Rwy 32 NA at night, Circling Rwy 6, 18, 24, 32 NA at night. When local altimeter setting not received, use Northwest Florida Beaches Intl altimeter setting and increase LPV DA to 480 feet and all visibilities $\frac{3}{4}$ SM. Increase LNAV/VNAV DA to 527 feet and all visibilities $\frac{3}{4}$ SM. Increase all MDAs 140 feet and LNAV visibility Cat C/D $\frac{3}{4}$ SM, and Circling visibility Cat C/D $\frac{1}{2}$ SM.

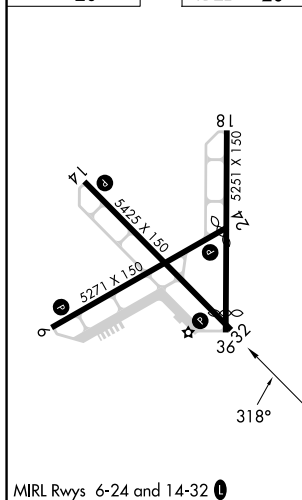
MISSED APPROACH:
Climb to 3000 direct
ASVOY and hold,
continue climb-in-hold
to 3000.

ASOS
119.925

TYNDALL APP CON ★
124.15

UNICOM
122.8 (CTAF) **L**

ELEV	20		TDZE	20
------	----	--	------	----



VGSJ and RNAV glidepath not coincident
(VGSJ Angle 3.00/TCH 66).

FEZCU 4 NM Holding Pattern

ODUGY 1700

138° → 6000
← 318° 2300

318°

1700

RW32

4.8 NM 6 NM

GP 3.19°
TCH 40

CATEGORY	A	B	C	D
LPV DA	349-1½		329 (400-1½)	
RNAV/ VNAV	396-1		376 (400-1)	
RNAV MDA	460-1 440 (500-1)		460-1¼ 440 (500-1¼)	
C CIRCLING	520-1 500 (500-1)		680-1¾ 680-2 660 (700-1¾) 660 (700-2)	