

VOR RAL
108.6

APP CRS
264°

Rwy Idg
4858
TDZE
636
Apt Elev
650

VOR RWY 26R
CHINO (CNO)

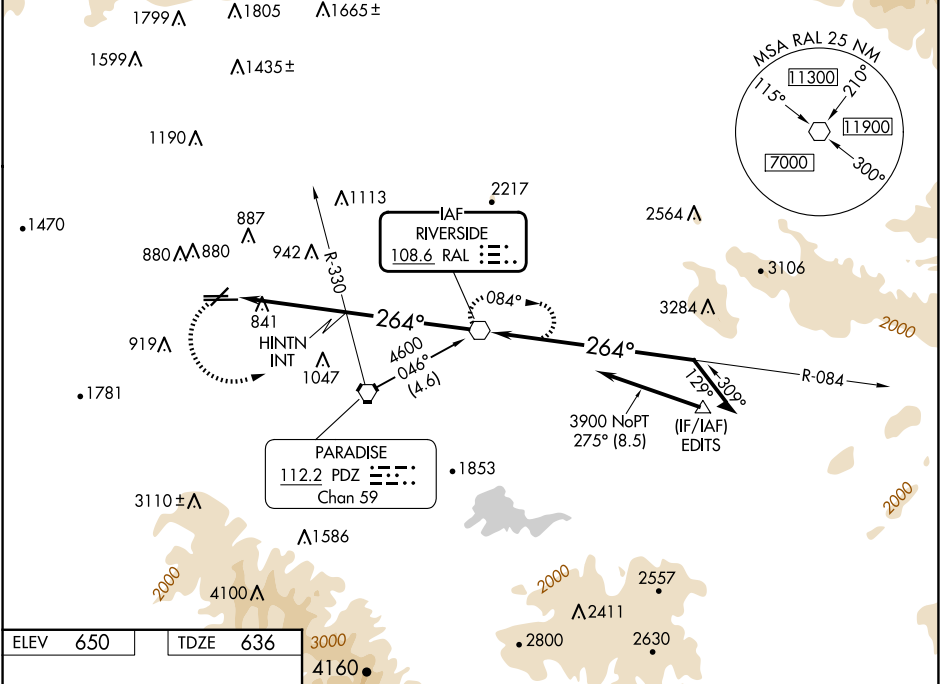
▼

NA

Rwy 26R helicopter visibility reduction below ¾ SM NA.
When local altimeter setting not received, use Ontario altimeter setting and increase all MDAs 60 feet; increase HINTN fix minimums visibility S-26R and Circling Cat B, C, and D ¼ SM.

MISSED APPROACH: Climbing left turn to 4500 direct RAL VOR and hold, continue climb-in-hold to 4500.

ATIS 125.85	SOCAL APP CON 135.4 377.125	CHINO TOWER ★ 118.5 (CTAF)	GND CON 121.6	UNICOM 122.95
----------------	--------------------------------	-------------------------------	------------------	------------------



ELEV 650 TDZE 636

4500 RAL

VGSI and descent angles not coincident (VGSI Angle 3.00/TCH 53).

RAL VOR

Remain within 10 NM

HINTN INT

≤ 3.32° TCH 53

2140*

3900

*2200 when using Riverside Muni altimeter setting.

CATEGORY	A	B	C	D
S-26R	2140-1¼ 1504 (1500-1¼)	2140-1½ 1504 (1500-1½)	2140-3	1504 (1500-3)
CIRCLING	2140-1¼ 1490 (1500-1¼)	2140-1½ 1490 (1500-1½)	2140-3	1490 (1500-3)
HINTN FIX MINIMUMS				
S-26R	1320-1 684 (700-1)	1320-2 684 (700-2)	1320-2¼ 684 (700-2¼)	
CIRCLING	1320-1 670 (700-1)	1320-2 670 (700-2)	1340-2¼ 690 (700-2¼)	

REIL Rws 3 and 21
MIRL Rws 3-21 and 8R-26L
HIRL Rwy 8L-26R

FAF to MAP 9.1 NM

Knots	60	90	120	150	180
Min:Sec	9:06	6:04	4:33	3:38	3:02