

MELFA, VIRGINIA

AL-5598 (FAA)

22251

WAAS CH 42905 W03A	APP CRS 034°	Rwy Idg 5000 TDZE 47 Apt Elev 48
--	------------------------	---

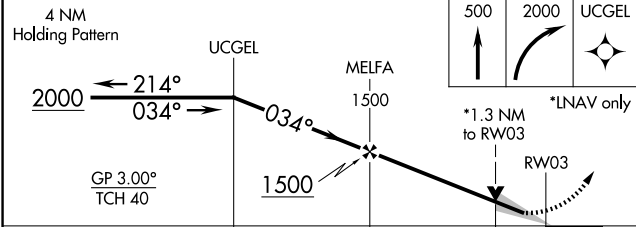
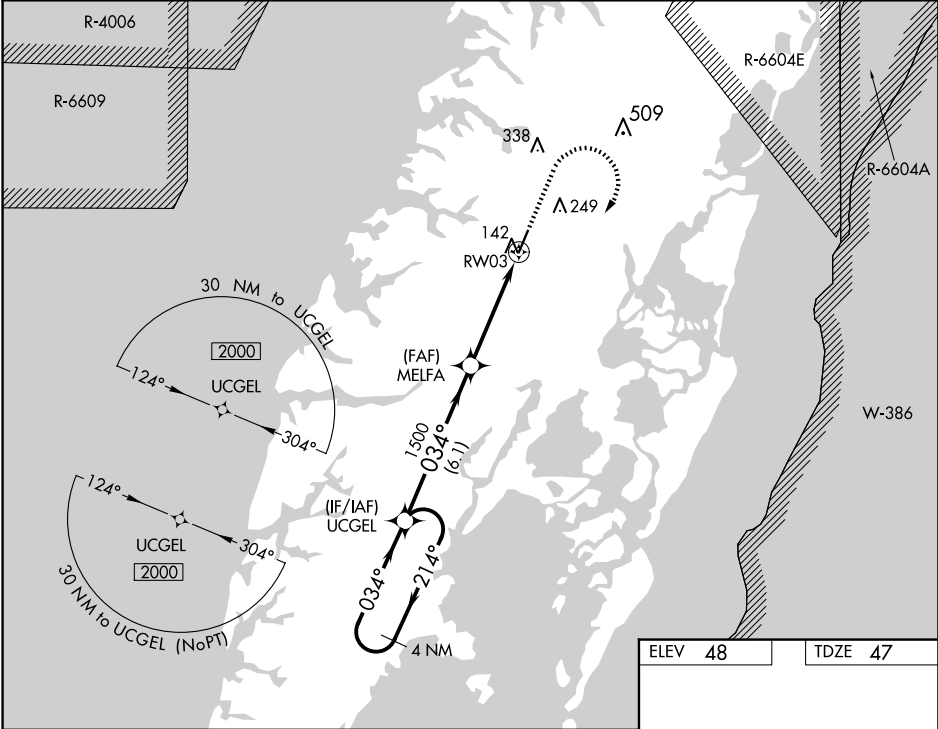
RNAV (GPS) RWY 3
ACCOMACK COUNTY (MFV)

RNP APCH-GPS.

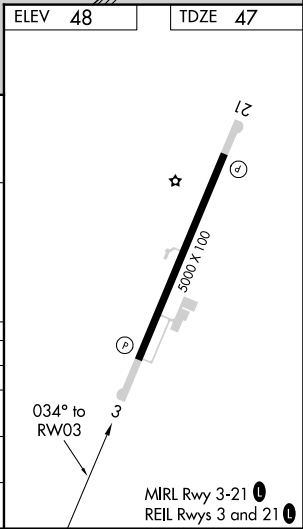
▼ For uncompensated Baro-VNAV systems, LNAV/VNAV NA below -15°C or above 54°C. Rwy 3 helicopter visibility reduction below ¾ SM NA.

MISSED APPROACH: Climb to 500 then climbing right turn to 2000 direct UCGEL and hold.

AWOS-3 118.175	PATUXENT APP CON* 127.95 314.0	UNICOM 122.8 (CTAF) 0
--------------------------	--	---------------------------------



CATEGORY	A	B	C	D
LPV DA	297-1	250 (300-1)		
LNAV/VNAV DA	349-1	302 (400-1)		
LNAV MDA	500-1	453 (500-1)	500-1¾ 453 (500-1¾)	
CIRCLING	500-1 452 (500-1)	560-1 512 (600-1)	700-1¾ 652 (700-1¾)	700-2 652 (700-2)



MELFA, VIRGINIA

Amdt 2B 11AUG22

37°39'N-75°46'W

RNAV (GPS) RWY 3
ACCOMACK COUNTY (MFV)

NE-3, 10 JUL 2025 to 07 AUG 2025

NE-3, 10 JUL 2025 to 07 AUG 2025