

MELFA, VIRGINIA

AL-5598 (FAA)

24361

LOC/DME I-MFV <b>110.15</b> Chan <b>38</b> (Y)	APP CRS <b>034°</b>	Rwy ldg TDZE <b>47</b> Apt Elev <b>48</b>
--	------------------------	---

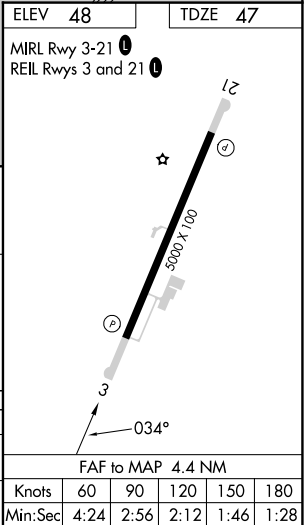
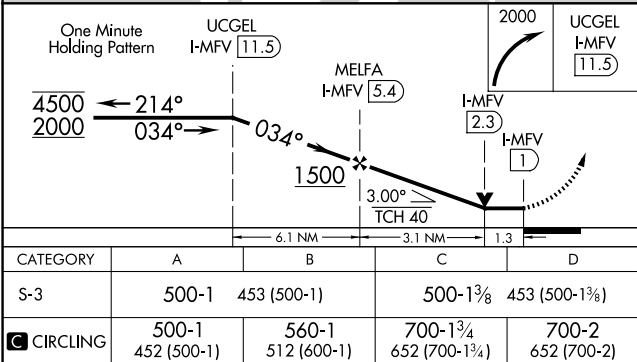
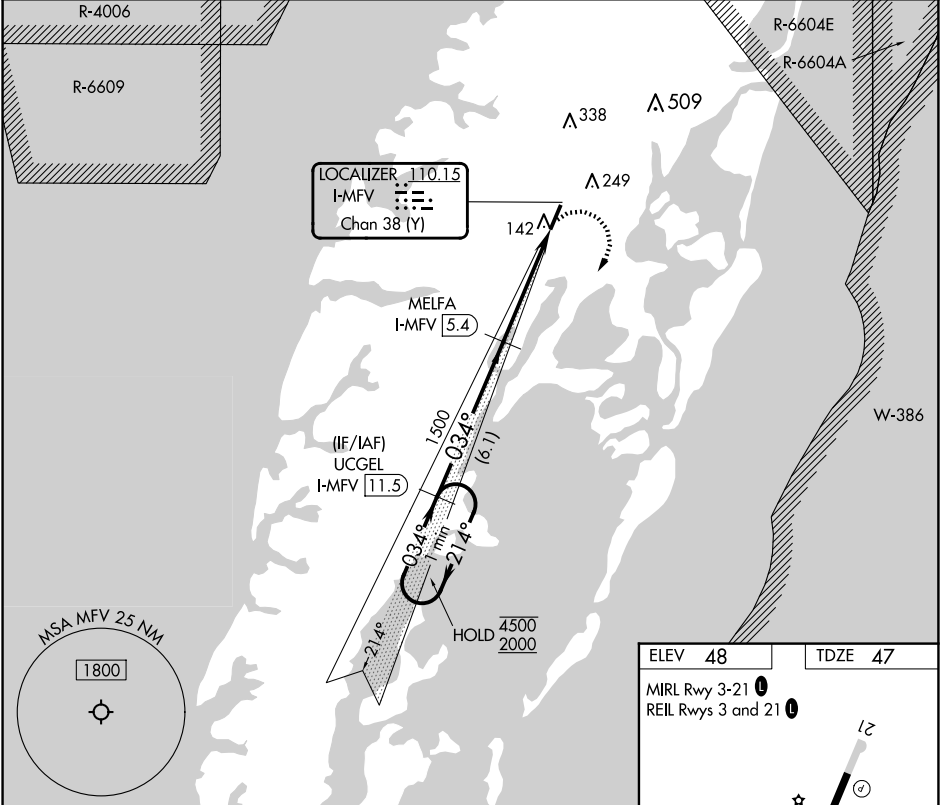
LOC RWY 3  
ACCOMACK COUNTY (MFV)

RNP APCH - GPS.

Rwy 3 helicopter visibility reduction below 3/4 SM NA.

MISSED APPROACH: Climbing right turn to 2000 direct UCGEL and hold.

AWOS-3 <b>118.175</b>	PATUXENT APP CON ★ <b>127.95 314.0</b>	UNICOM <b>122.8</b> (CTAF) <b>0</b>
--------------------------	---	--



MELFA, VIRGINIA  
Amdt 2 26DEC24

37°39'N-75°46'W

ACCOMACK COUNTY (MFV)  
LOC RWY 3

NE-3, 10 JUL 2025 to 07 AUG 2025

NE-3, 10 JUL 2025 to 07 AUG 2025