

SW-2, 10 JUL 2025 to 07 AUG 2025

RIO VISTA, CALIFORNIA

AL-5597 (FAA)

22139

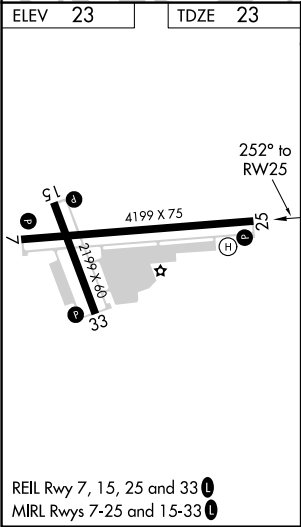
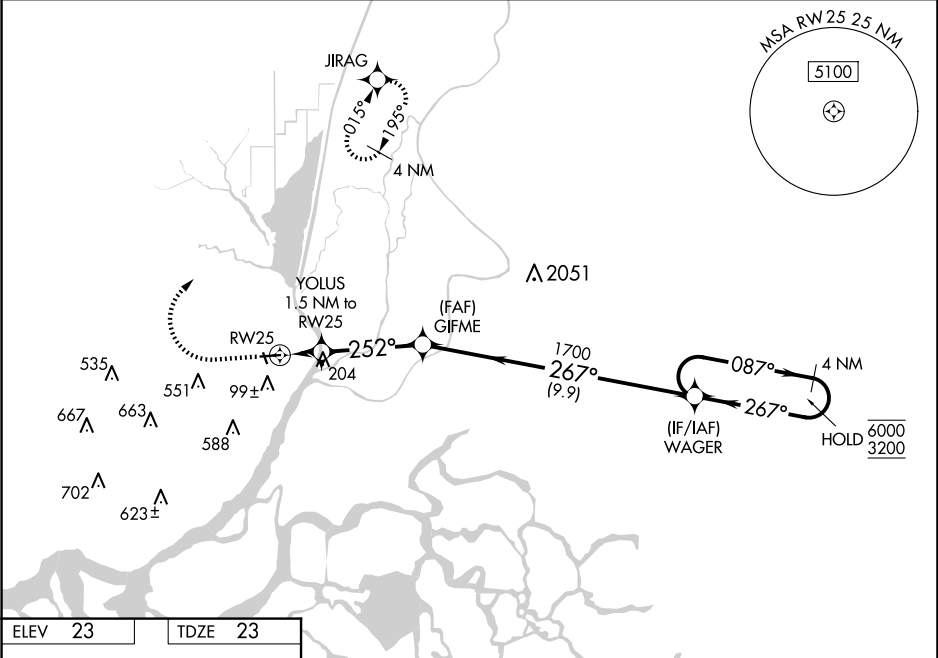
WAAS CH 82325 W25A	APP CRS 252°	Rwy Idg TDZE Apt Elev	4199 23 23
--	------------------------	-----------------------------	---------------------------------------

RNAV (GPS) RWY 25

RIO VISTA MUNI (O88)

RNP APCH - GPS.		MISSED APPROACH: Climb to 500 then climbing right turn to 3100 direct JIRAG and hold, continue climb-in-hold to 3100.
NA	Circling Rwy 33 NA at night. For uncompensated Baro-VNAV systems, LNAV/VNAV NA below -15°C or above 54°C.	

AWOS-AV 127.075	TRAVIS APP CON 119.9 257.9	UNICOM 122.725 (CTAF)
---------------------------	--------------------------------------	---------------------------------



500 3100 JIRAG		VGSI and RNAV glidepath not coincident (VGSI Angle 4.00/TCH 40).		4 NM Holding Pattern	
YOLUS 1.5 NM to RW25		GIFME		WAGER	
0.9 NM to RW25		267° 1700		087° 6000 3200	
RW25		252° 540		GP 3.00° TCH 40	
0.9 0.6 3.6 NM 9.9 NM					
CATEGORY	A	B	C	D	
LPV DA	223-3/4		200 (200-3/4)		NA
LNAV/VNAV DA	353-1		330 (400-1)		NA
LNAV MDA	460-1	437 (500-1)		460-1 1/4 437 (500-1 1/4)	NA
CIRCLING	460-1 437 (500-1)	600-1 577 (600-1)		940-2 3/4 917 (1000-2 3/4)	

RIO VISTA, CALIFORNIA
Amdt 4 24MAR22

38°12'N-121°42'W

RIO VISTA MUNI (O88)

RNAV (GPS) RWY 25

SW-2, 10 JUL 2025 to 07 AUG 2025