

WAAS CH 86905 W04A	APP CRS 040°	Rwy Idg 4775 TDZE 58 Apt Elev 72
--	------------------------	---

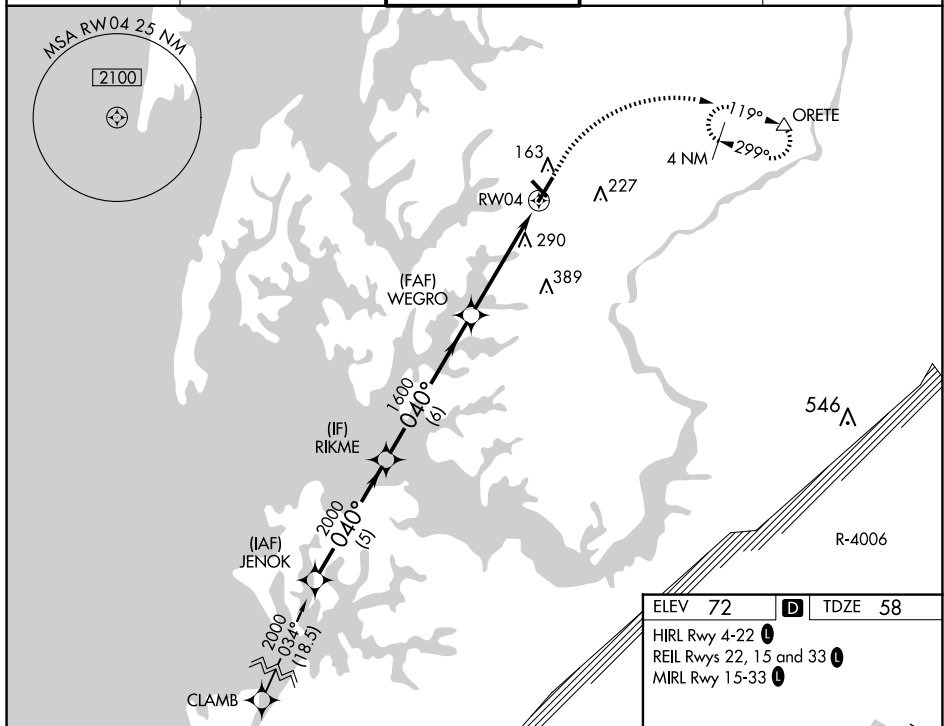
RNAV (GPS) RWY 4
EASTON/NEWNAM FLD (ESN)

RNP APCH - GPS.

T When local altimeter setting not received, use Cambridge altimeter setting; increase LPV DA to 303 feet, LNAV/VNAV DA to 670 feet and visibility $\frac{1}{8}$ SM; increase all MDAs 60 feet and visibility $\frac{1}{8}$ SM. **A** LNAV Cat C/D and Circling Cat C $\frac{1}{8}$ SM, and Circling Cat D $\frac{1}{4}$ SM. VDP and Baro-VNAV NA when using Cambridge altimeter setting. Circling Rwy 15, 33 NA at night. For uncompensated Baro-VNAV systems, LNAV/VNAV NA below -15°C or above 54°C.

MISSED APPROACH:
Climb to 700 then
climbing right turn to
2000 direct ORETE
and hold.

ATIS 124.475	POTOMAC APP CON 133.75 254.35	EASTON TOWER ★ 118.525 (CTAF) 0	GND CON 119.075	CLNC DEL 119.075
------------------------	---	---	---------------------------	----------------------------



CATEGORY	A	B	C	D
LPV DA	258- $\frac{3}{4}$	200 (200- $\frac{3}{4}$)		
LNAV/ VNAV DA	625-1 $\frac{5}{8}$	567 (600-1 $\frac{5}{8}$)		
LNAV MDA	600-1	542 (600-1)	600-1 $\frac{5}{8}$	542 (600-1 $\frac{5}{8}$)
C CIRCLING	600-1 528 (600-1)	640-1 568 (600-1)	640-1 $\frac{5}{8}$ 568 (600-1 $\frac{5}{8}$)	740-2 668 (700-2)

