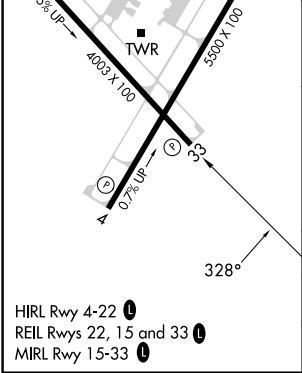
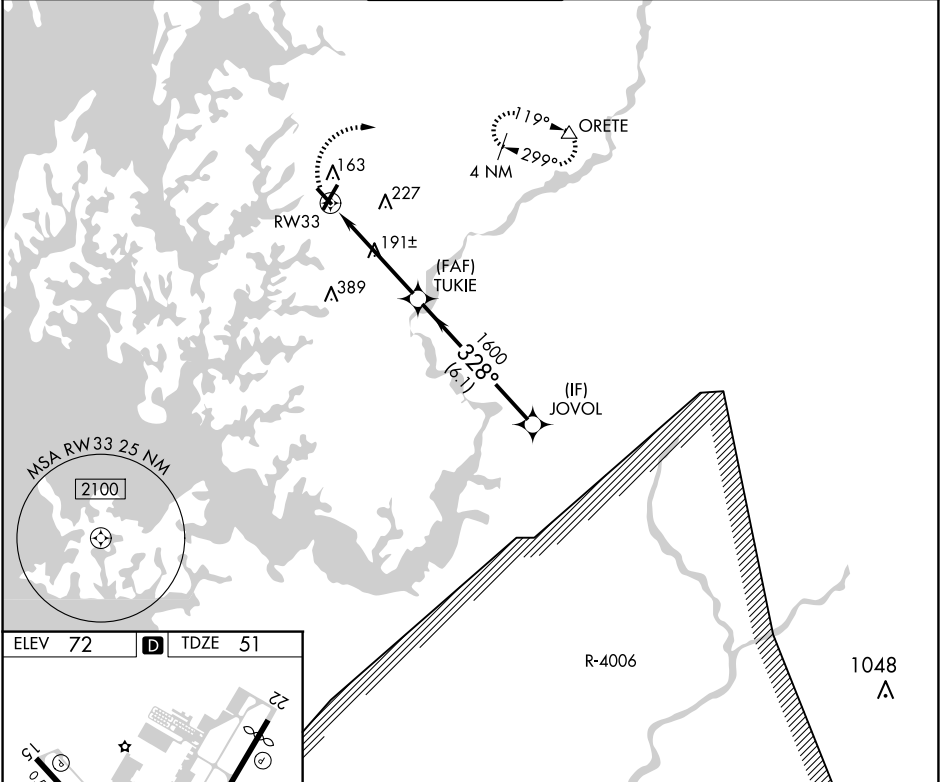


APP CRS	Rwy Idg	4003
328°	TDZE	51
	Apt Elev	72

RNAV (GPS) RWY 33

EASTON/NEWNAM FLD (ESN)

RNP APCH.		MISSED APPROACH: Climbing right turn to 2000 direct ORETE and hold.		
Straight-in Rwy 33 NA at night, Circling Rwy 15, 33 NA at night. Helicopter visibility reduction below 1 SM NA.				
ATIS 124.475	POTOMAC APP CON 133.75 254.35	EASTON TOWER ★ 118.525 (CTAF) 0	GND CON 119.075	CLNC DEL 119.075



2000 ORETE		Visual Segment - Obstacles.		
JOVOL		TUKIE		
RW33		1600		
4.7 NM		6.1 NM		
CATEGORY	A	B	C	D
LNAV MDA	520-1	469 (500-1)	520-1 3/8 469 (500-1 3/8)	520-1 1/2 469 (500-1 1/2)
CIRCLING	520-1 448 (500-1)	640-1 568 (600-1)	640-1 1/2 568 (600-1 1/2)	740-2 668 (700-2)