

WAAS CH 40207 W22A	APP CRS 221°	Rwy Idg 5175 TDZE 72 Apt Elev 72
--	------------------------	---

RNAV (GPS) RWY 22

EASTON/NEWNAM FLD (E5N)

RNP APCH.

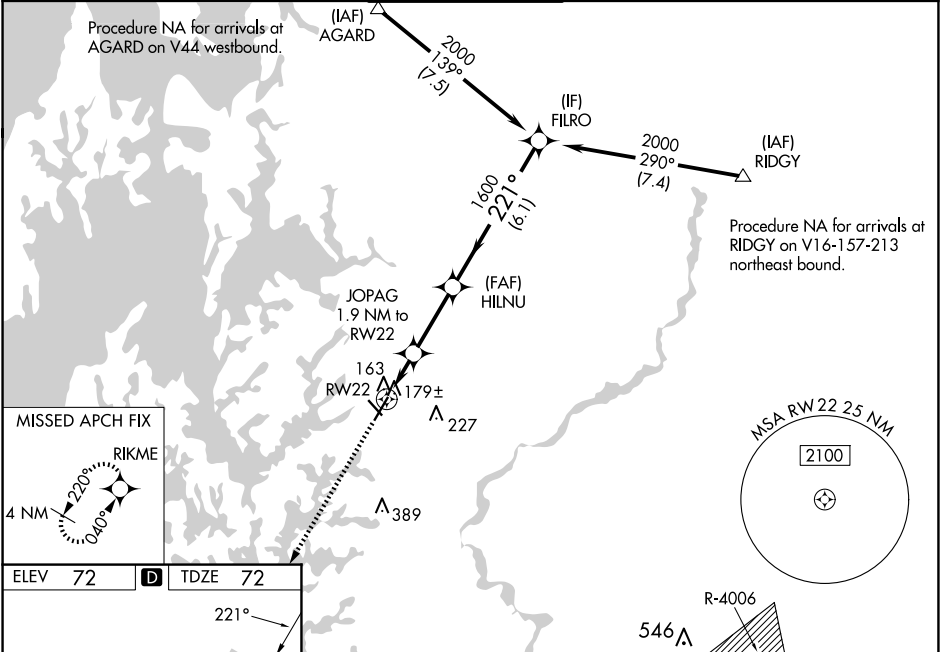
▼

▲

Baro-VNAV NA when using Baltimore altimeter setting. For uncompensated Baro-VNAV systems, LNAV/VNAV NA below -15°C or above 43°C. Rwy 22 helicopter visibility reduction below ¾ SM NA. When local altimeter setting not received, use Baltimore altimeter setting and increase all DA 93 feet and all MDA 100 feet; increase LPV all Cats visibility ½ SM, increase LNAV/VNAV all Cats visibility ¼ SM, and increase LNAV Cats C and D ¼ SM.

MISSED APPROACH: Climb to 2000 direct RIKME and hold.

ATIS 124.475	POTOMAC APP CON 133.75 254.35	EASTON TOWER ★ 118.525 (CTAF) 0	GND CON 119.075	CLNC DEL 119.075
------------------------	---	---	---------------------------	----------------------------



2000

↑

RIKME

✧

*LNAV only

RW22

JOPAG 1.9 NM to RW22

HILNU 1600

FILRO 2000

221°

1600

700*

1.9 NM

2.8 NM

6.1 NM

GP 3.00° TCH 45

CATEGORY	A	B	C	D
LPV DA		322-1	250 (300-1)	
LNAV/VNAV DA		362-1	290 (300-1)	
LNAV MDA		440-1	368 (400-1)	

HIRL Rwy 4-22 1

REIL Rws 22, 15 and 33 1

MIRL Rwy 15-33 1