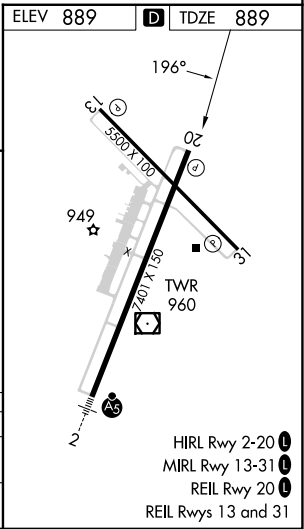
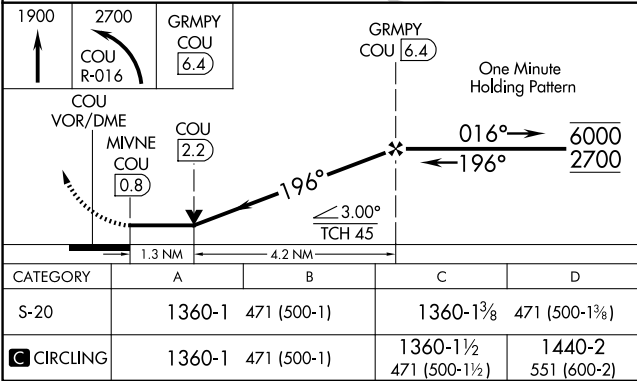
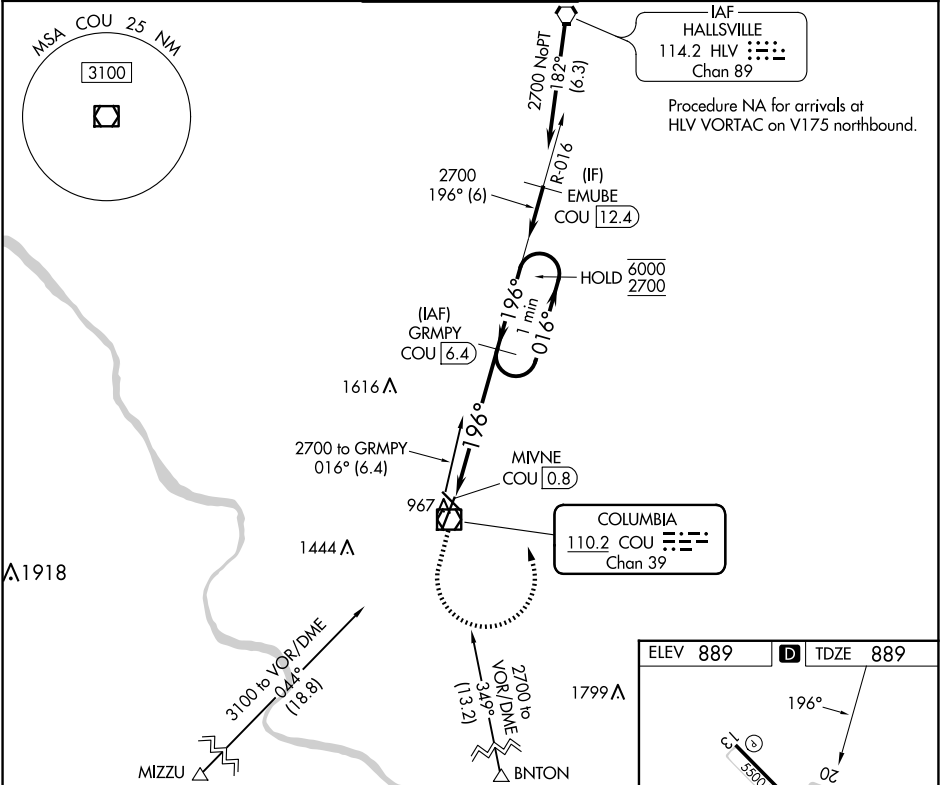


VOR/DME COU	APP CRS	Rwy Idg	7401
110.2	196°	TDZE	889
Chan 39		Apt Elev	889

VOR Y RWY 20  
COLUMBIA RGNL (COU)

DME required.	MISSED APPROACH: Climb to 1900 then climbing left turn to 2700 on COU VOR/DME R-016 to GRMPY/COU 6.4 DME and hold.
Circling NA for Cat D west of Rwys 2 and 13.	

ATIS 128.45	MIZZU APP CON 124.375 353.925	COLUMBIA TOWER ★ 119.3 (CTAF) 363.25	GND CON 121.6	UNICOM 122.95
----------------	----------------------------------	---	------------------	------------------



NC-3, 10 JUL 2025 to 07 AUG 2025

NC-3, 10 JUL 2025 to 07 AUG 2025