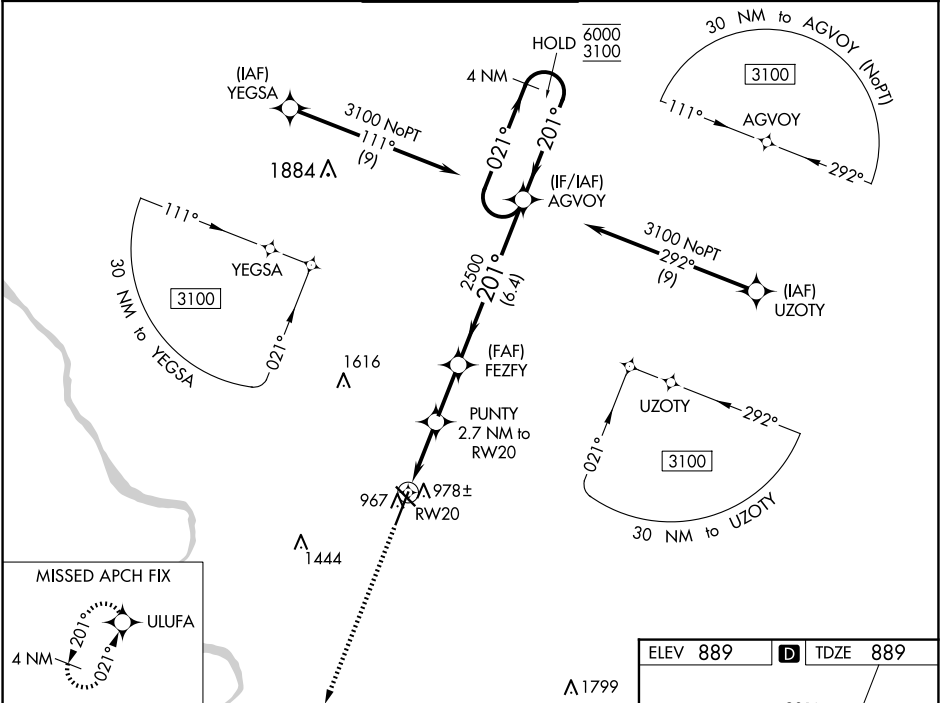


WAAS CH <b>93599</b> <b>W20A</b>	APP CRS <b>201°</b>	Rwy Idg TDZE Apt Elev	<b>7401</b> <b>889</b> <b>889</b>
--	------------------------	-----------------------------	---

RNAV (GPS) RWY 20

COLUMBIA RGNL (COU)

RNP APCH - GPS.		MISSED APPROACH: Climb to 3100 direct ULUFA and hold.	
CIRCLING NA for Cat D west of Rwy 2 and 13. For uncompensated Baro-VNAV systems, LNAV/VNAV NA below -16°C or above 54°C.			
ATIS <b>128.45</b>	MIZZU APP CON <b>124.375 353.925</b>	COLUMBIA TOWER ★ <b>119.3 (CTAF) 363.25</b>	GND CON <b>121.6</b>
		UNICOM <b>122.95</b>	



3100 ↑ ULUFA		AGVOY		4 NM Holding Pattern	
PUNTY 2.7 NM to RW20		FEZFY 2500		021° → 6000 ← 201° 3100	
1 NM to RW20		201°		GP 3.00° TCH 45	
RW20		2500			
1 NM		1800			
1.8 NM		2.2 NM		6.4 NM	
CATEGORY	A	B	C	D	
LPV DA	1139-¾ 250 (300-¾)				
LNAV/ VNAV DA	1139-¾ 250 (300-¾)				
LNAV MDA	1240-1 351 (400-1)				
CIRCLING	1280-1 391 (400-1)	1340-1 451 (500-1)	1360-1½ 471 (500-1½)	1440-2 551 (600-2)	

