

WAAS
CH **77599**
W02A

APP CRS
021°

Rwy Idg
TDZE **889**
Apt Elev **889**

RNAV (GPS) RWY 2

COLUMBIA RGNL (COT)

RNP APCH-GPS.

⚠

⚠

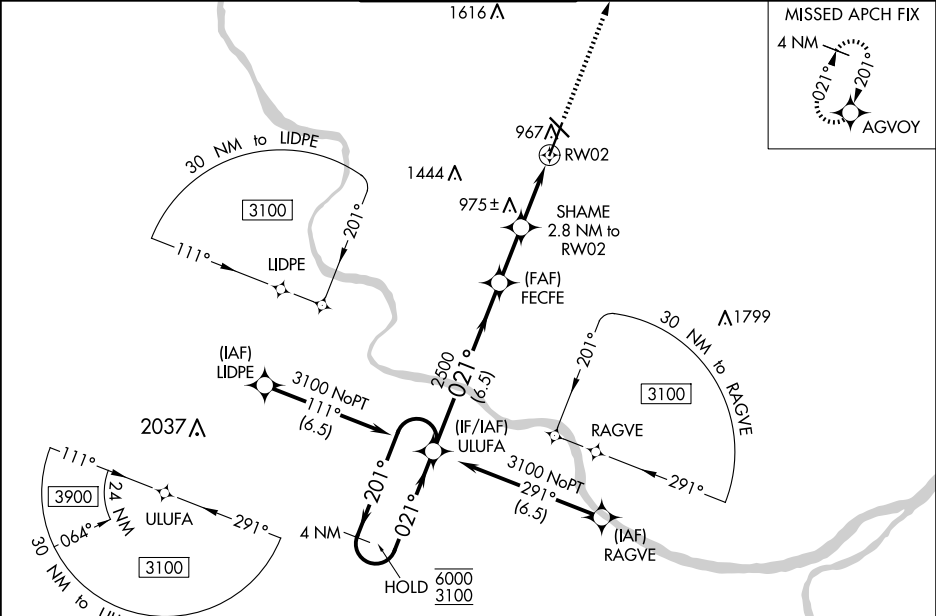
Circling NA for Cat D west of Rws 2 and 13. For uncompensated Baro-VNAV systems, LNAV/VNAV NA below -16°C or above 54°C. For inop ALS, increase LNAV/VNAV all Cats visibility to RVR 4000 and increase LNAV Cat C/D visibility to RVR 5500.
*RVR 1800 authorized with the use of FD or AP or HUD to DA.

MALSRL

AS

MISSED APPROACH: Climb to 3100 direct AGVOY and hold.

ATIS 128.45	MIZZU APP CON 124.375 353.925	COLUMBIA TOWER ★ 119.3 (CTAF) 0 363.25	GND CON 121.6	UNICOM 122.95
-----------------------	---	--	-------------------------	-------------------------



ELEV 889

D

TDZE 889

4 NM Holding Pattern

ULUFA

6000 ← 201°

3100 → 021°

GP 3.00°

TCH 45

2500

1820

2500

1820

1 NM to RW02

1 NM

1.8 NM

2.1 NM

6.5 NM

3100

AGVOY

CATEGORY	A	B	C	D
LPV DA*	1089/24		200 (200-½)	
LNAV/VNAV DA	1143/24		254 (300-½)	
LNAV MDA	1240/24	351 (400-½)	1240/30	351 (400-¾)
CIRCLING	1280-1 391 (400-1)	1340-1 451 (500-1)	1360-1½ 471 (500-1½)	1440-2 551 (600-2)

5300 x 100

401 x 130

949

TWR 960

HIRL Rwy 2-20

MIRL Rwy 13-31

REIL Rwy 20

REIL Rws 13 and 31