

VOR/DME PVD	APP CRS	Rwy Ldg	2623
115.6	164°	TDZE	162
Chan 103		Apt Elev	172

VOR/DME RWY 16

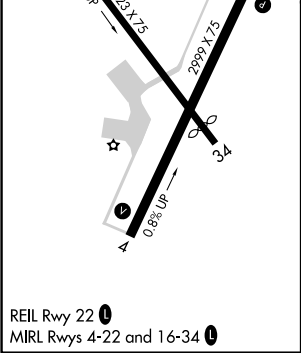
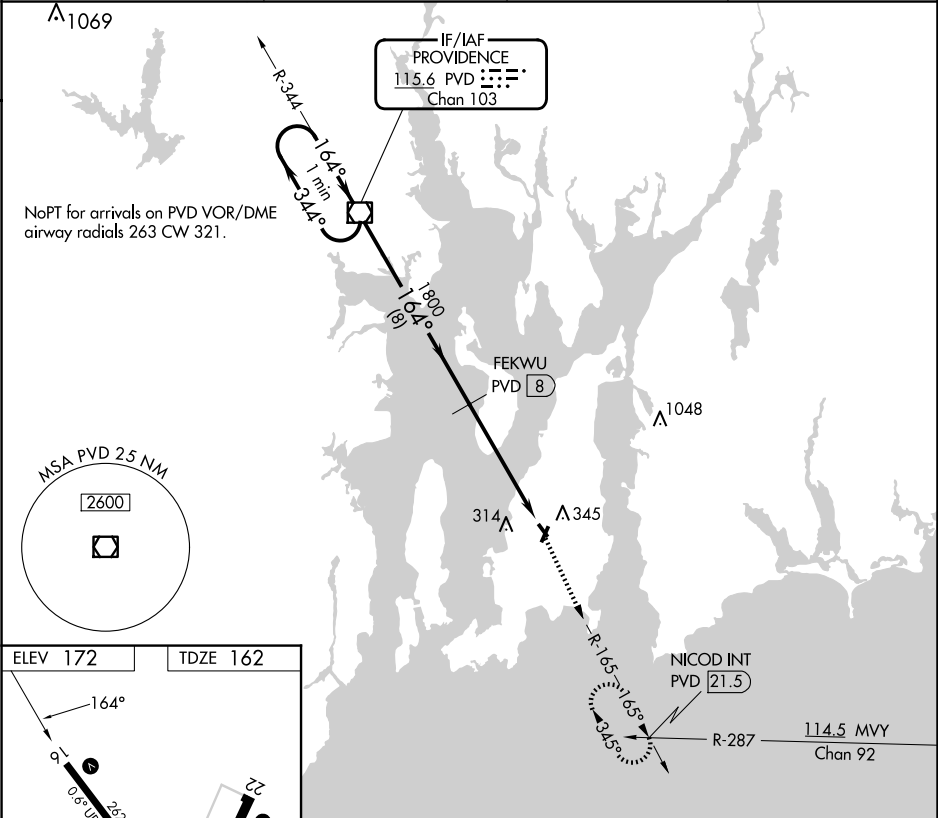
NEWPORT STATE (UUU)

⚠

When local altimeter setting not received, use Providence altimeter setting and increase all MDA 60 feet; increase S-16 Cat C visibility ¼ mile. Circling Rwy 4, 22, 34 NA at night. Rwy 16 helicopter visibility reduction below ¾ SM NA.

MISSED APPROACH: Climb to 2100 via PVD R-165 to NICOD INT/21.5 DME and hold.

ASOS 132.075	PROVIDENCE APP CON★ 128.7 269.525	CLNC DEL 127.25	UNICOM 123.05 (CTAF) 📻
-----------------	--------------------------------------	--------------------	---------------------------



One Minute Holding Pattern

3000

344°

164°

VGSI and descent angles not coincident (VGSI Angle 3.75/TCH 40).

PVD VOR/DME

FEKWU PVD (8)

1800

164°

3.04°

TCH 40

PVD (13)

2100

PVD R-165

NICOD INT

8 NM

5 NM

CATEGORY

A

B

C

D

S-16

680-1

518 (600-1)

680-1½

518 (600-1½)

NA

CIRCLING

700-1

528 (600-1)

760-1

588 (600-1)

780-1¾

608 (700-1¾)

NA