

| | | |
|--|------------------------|---|
| WAAS CH 86337 W24A | APP CRS 242° | Rwy Idg 3300 TDZE 9 Apt Elev 9 |
|--|------------------------|---|

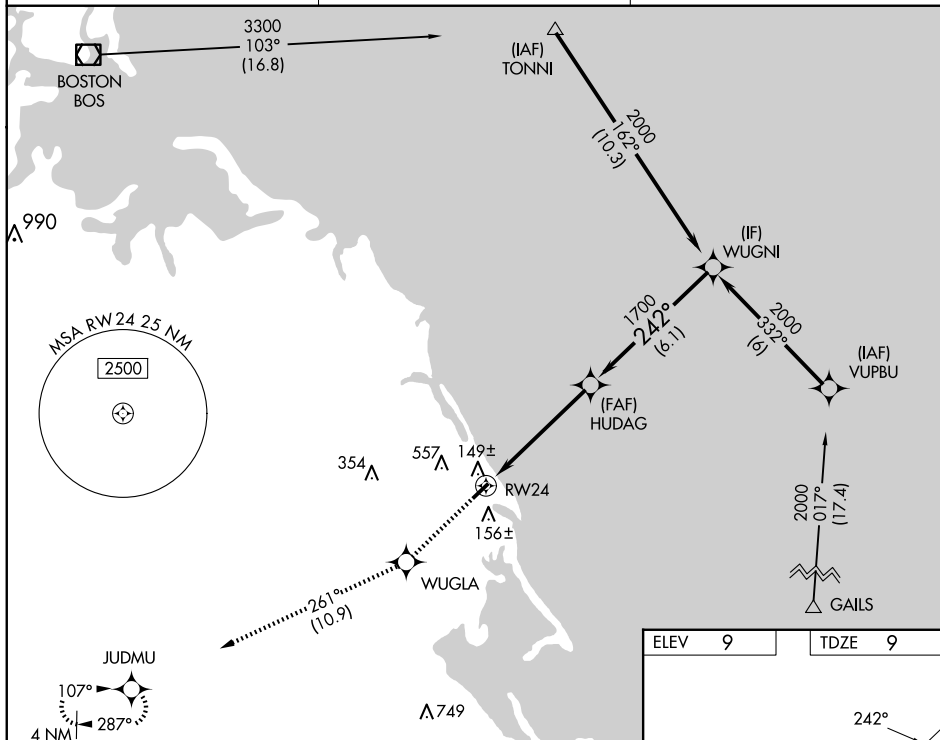
RNAV (GPS) RWY 24

MARSHFIELD MUNI - GEORGE HARLOW FLD (GHG)

T For uncompensated Baro-VNAV systems, LNAV/VNAV NA below -15°C [5°F] or above 54°C (130°F). DME/DME RNP-0.3 NA. When local altimeter setting not received, use Plymouth altimeter setting and increase all DA 47 feet, and all MDA 60 feet; increase LPV all Cats visibility ½ mile, increase LNAV/VNAV all Cats visibility ½ mile. Baro VNAV and VDP NA when using Plymouth altimeter setting. Helicopter visibility reduction below ¾ SM NA.

MISSED APPROACH: Climb to 2000 direct WUGLA and on track 261° to JUDMU and hold.

| | | |
|------------------------|--------------------------------|--|
| AWOS-3 120.0 | BOSTON APP CON 124.1 | UNICOM 122.8 (CTAF) 0 |
|------------------------|--------------------------------|--|

[illegible]