

WAAS  
CH **82216**  
**W13A**

APP CRS  
**127°**

Rwy Idg  
TDZE **135**  
Apt Elev **135**

RNAV (GPS) RWY 13L

REID-HILLVIEW OF SANTA CLARA COUNTY (RHV)

RNP APCH.

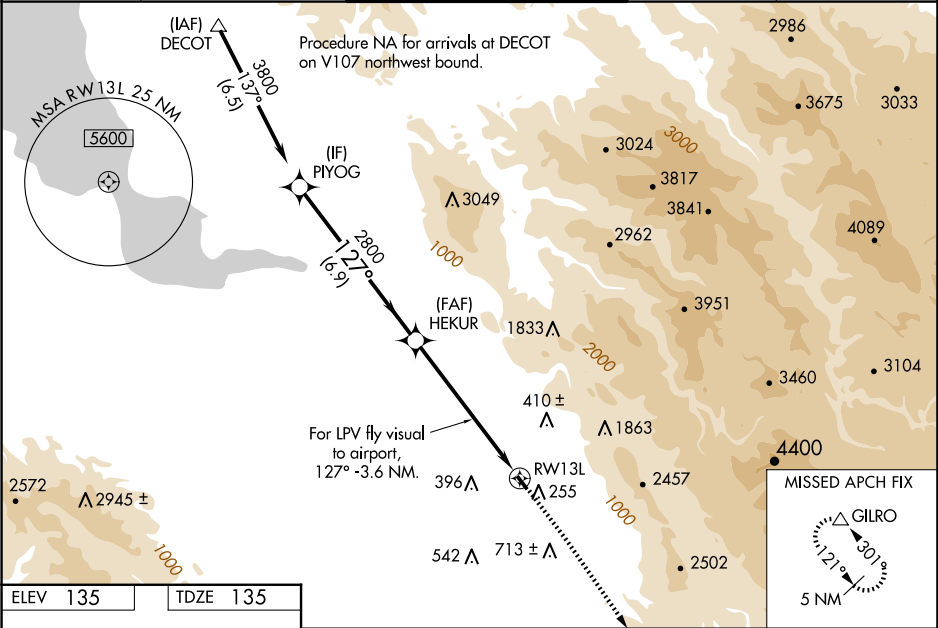
NA

NA

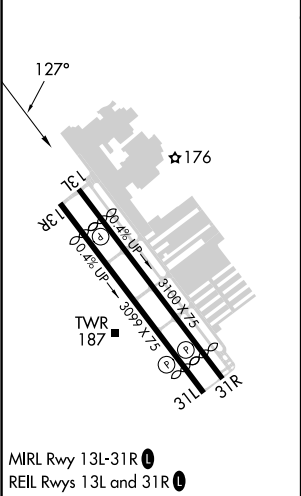
Circling Rwy 31L NA at night. Rwy 13L helicopter visibility reduction below ¾ SM NA. VDP NA with Norman Y Mineta San Jose Intl altimeter setting. When control tower closed, use Norman Y Mineta San Jose Intl altimeter setting and increase all DAs 25 feet and all MDAs 40 feet; increase LPV# visibility to 1¾ SM. Circling east of Rwy 13L-31R NA at night.

MISSED APPROACH: Climb to 1900 then climbing right turn to 5000 direct GILRO and hold.  
#Missed approach requires minimum climb of 300 feet per NM to 2800.

ATIS <b>125.2</b>	NORCAL APP CON <b>120.1 290.25</b>	REID-HILLVIEW TOWER ★ (Rwy 13L-31R) (Rwy 13R-31L) <b>119.8 (CTAF) 126.1</b>	GND CON <b>121.65</b>	UNICOM <b>122.95</b>
----------------------	---------------------------------------	---	--------------------------	-------------------------



ELEV 135	TDZE 135
----------	----------



PIYOG		HEKUR		* LNAV only.		1900 ↑	5000 ↗	GILRO △
3800		2800		127°		For LPV fly visual to RW13L		
GP 4.00° TCH 45		2800		*2 NM to RW13L		RW13L		
		6.9 NM		4.2 NM		2 NM		
CATEGORY	A	B		C	D			
LPV DA#	562-1¼	427 (500-1¼)		NA				
LPV DA	1708-3	1573 (1600-3)		NA				
LNAV MDA#	1040-1¼	905 (1000-1¼)		NA				
LNAV MDA	1600-1¼ 1465 (1500-1¼)	1600-1½ 1465 (1500-1½)		NA				
CIRCLING	1600-1¼ 1465 (1500-1¼)	1600-1½ 1465 (1500-1½)		NA				