

WAAS CH 97423 W06A	APP CRS 064°	Rwy Idg TDZE Apt Elev	5301 822 823
--	------------------------	-----------------------------	---

RNAV (GPS) RWY 6

MEXICO MEML (MYJ)

RNP APCH - GPS.

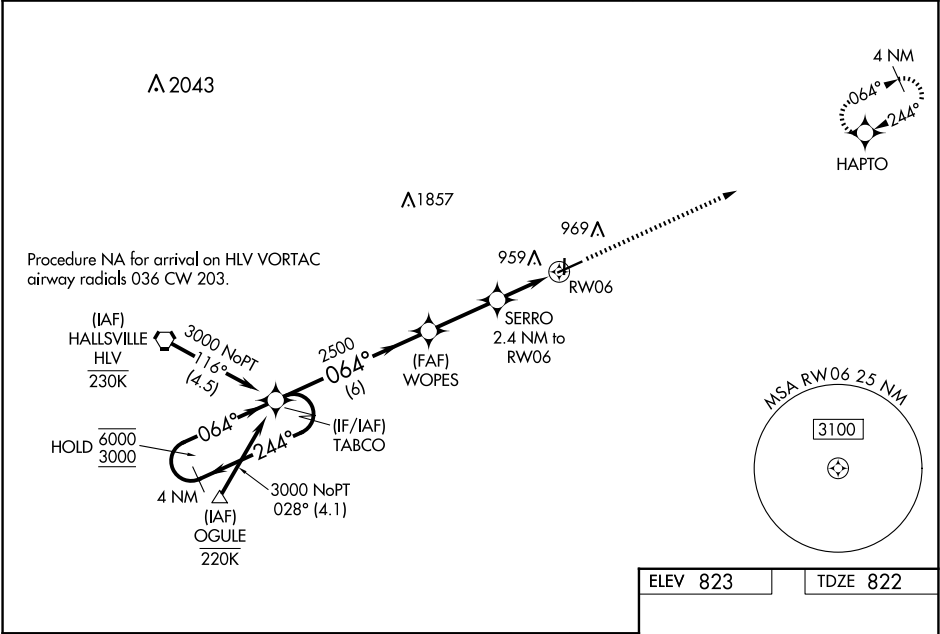
▼

▲ NA

Baro-VNAV and VDP NA when using Columbia altimeter setting. For uncompensated Baro-VNAV systems, LNAV/VNAV NA below -16°C or above 54°C. When local altimeter setting not received, use Columbia altimeter setting: increase LPV DA to 1146 feet and visibilities ¼ SM; increase LNAV/VNAV DA to 1167 feet and visibilities ½ SM; increase all MDAs 80 feet and LNAV visibility Cat C ¾ SM and Circling visibility Cat C ½ SM.

MISSED APPROACH: Climb to 3000 direct HAPTO and hold.

AWOS-3PT 120.575	MIZZU APP CON 124.375	CTAF 122.9 0
----------------------------	---------------------------------	------------------------



4 NM Holding Pattern

TABCO

WOPES

SERRO 2.4 NM to RW06

1.1 NM to RW06

RW06

3000

HAPTO

GP 3.00° TCH 40

6000

3000

244°

064°

064°

2500

1640

6 NM

2.7 NM

1.4 NM

1.1 NM

CATEGORY	A	B	C	D
LPV DA	1072-¾	250 (300-¾)		NA
LNAV/VNAV DA	1093-⅞	271 (300-⅞)		NA
LNAV MDA	1200-1	378 (400-1)		NA
CIRCLING	1280-1	457 (500-1)	1420-1½ 597 (600-1½)	NA

ELEV 823

TDZE 822

REIL Rwy 18 0

MIRL Rwy 6-24 and 18-36 0

8 L

3200 X 50

36

064°

5501 X 100

0.3% UP

NC-3, 10 JUL 2025 to 07 AUG 2025

NC-3, 10 JUL 2025 to 07 AUG 2025