

WAAS CH 56213 W24A	APP CRS 244°	Rwy Idg 5130 TDZE 817 Apt Elev 823
--	------------------------	---

RNAV (GPS) RWY 24

MEXICO MEML (MYJ)

▼ Helicopter visibility reduction below $\frac{3}{4}$ SM NA. Inoperative table does not apply.
▲ NA DME/DME RNP-0.3 NA. For uncompensated Baro-VNAV systems, LNAV/VNAV NA below -16°C (4°F) or above 54°C (130°F). When local altimeter setting not received, use Columbia Rgnl altimeter setting; increase LPV DA to 1200 feet; increase LNAV/VNAV DA to 1352 feet; increase all MDAs 80 feet and Circling visibility Cat C $\frac{1}{2}$ SM. Baro-VNAV NA when using Columbia Rgnl altimeter setting.

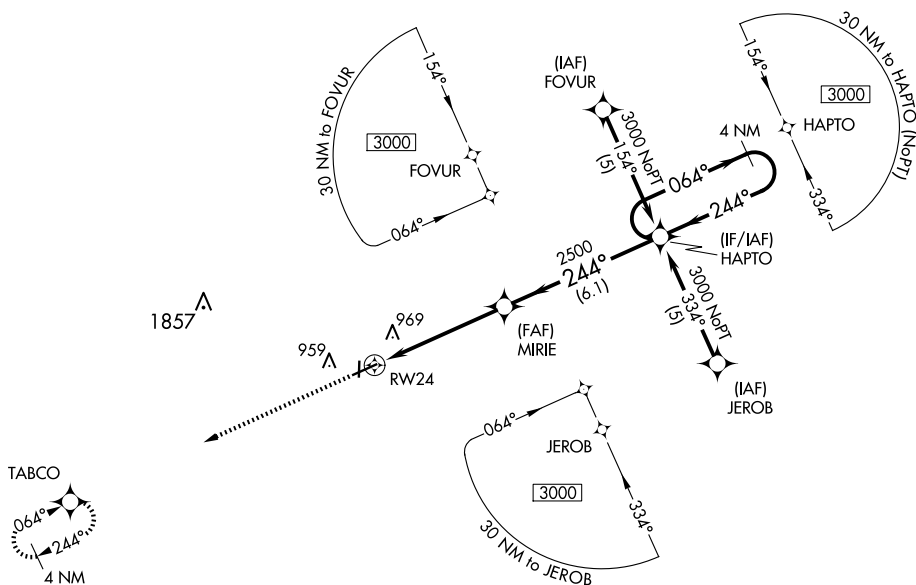
MALS



MISSED APPROACH:
Climb to 3000 direct
TABCO and hold.

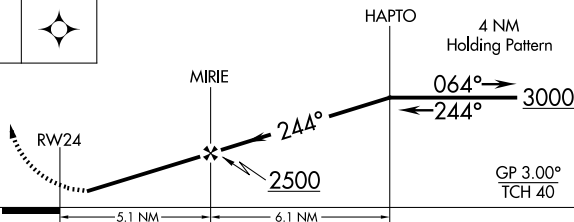
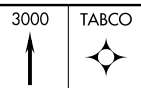
AWOS-3PT
120.575

MIZZU APP CON
124.375

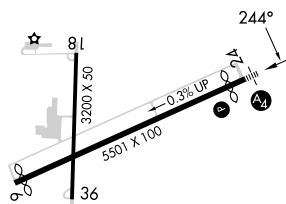
CTAF
122.9 **L**

NC-3, 10 JUL 2025 to 07 AUG 2025

ELEV 823		TDZE 817
----------	--	----------



CATEGORY	A	B	C	D
LPV DA	1126-1	309 (400-1)		NA
LNAV/ VNAV DA	1278-1¾	461 (500-1¾)		NA
LNAV MDA	1220-1	403 (400-1)	1220-1¼ 403 (400-1¼)	NA
CIRCLING	1280-1	457 (500-1)	1420-1½ 597 (600-1½)	NA



REIL Rwy 18 **L**
MIRL Rwy 6-24 and 18-36 **L**