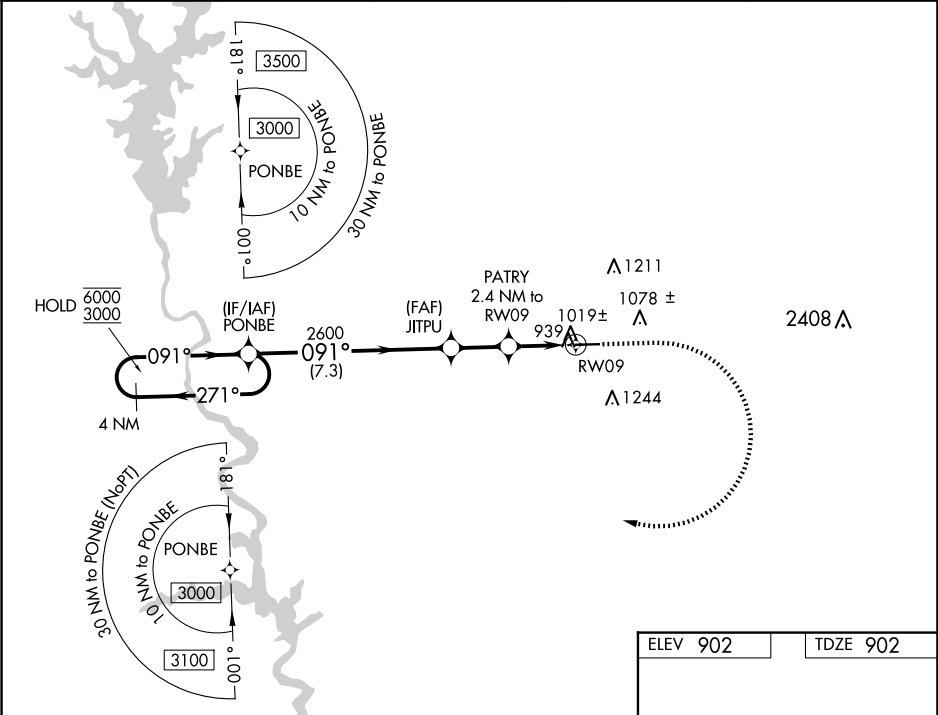


WAAS CH 58019 W09A	APP CRS 091°	Rwy Idg 5002 TDZE 902 Apt Elev 902
--	------------------------	---

RNAV (GPS) RWY 9

HARRIS COUNTY (PIM)

RNP APCH - GPS.				MISSED APPROACH: Climb to 1500 then climbing right turn to 3000 direct PONBE and hold.	
Circling Rwy 27 NA at night. Rwy 9 helicopter visibility reduction below ¾ SM NA. For uncompensated Baro-VNAV systems, LNAV/VNAV NA below -16°C or above 48°C.					
AWOS-3PT 120.275	ATLANTA APP CON★ 125.5 323.1	CLNC DEL 127.7	GCO 121.725	UNICOM 122.8 (CTAF) 0	



4 NM Holding Pattern PONBE		VGSI and RNAV glidepath not coincident (VGSI Angle 3.00/TCH 27).		1500	3000	PONBE
GP 3.50° TCH 40		JITPU 2600		PATRY 2.4 NM to RW09		
2600		1820		0.9 NM to RW09		
7.3 NM		2.1 NM		1.5 NM		
0.9 NM						
CATEGORY	A	B	C	D		
LPV DA	1213-7/8		311 (400-7/8)			
LNAV/VNAV DA	1245-1		343 (400-1)			
LNAV MDA	1280-1		378 (400-1)			
CIRCLING	1320-1 418 (500-1)	1440-1 538 (600-1)	1700-2¼ 798 (800-2¼)	1820-3 918 (1000-3)		

