

LOC I-CAC 111.7	APP CRS 174°	Rwy Idg TDZE Apt Elev	6705 1530 1534
---------------------------	------------------------	-----------------------------	---

ILS or LOC RWY 17
NEWTON-CITY-COUNTY (EWK)

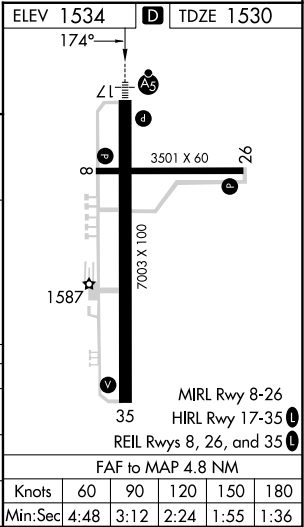
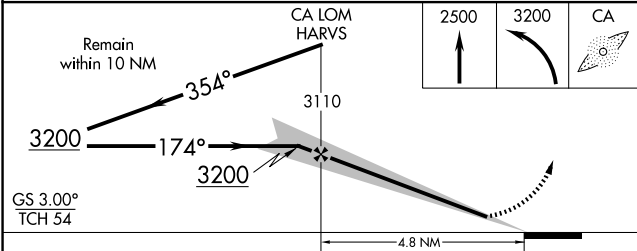
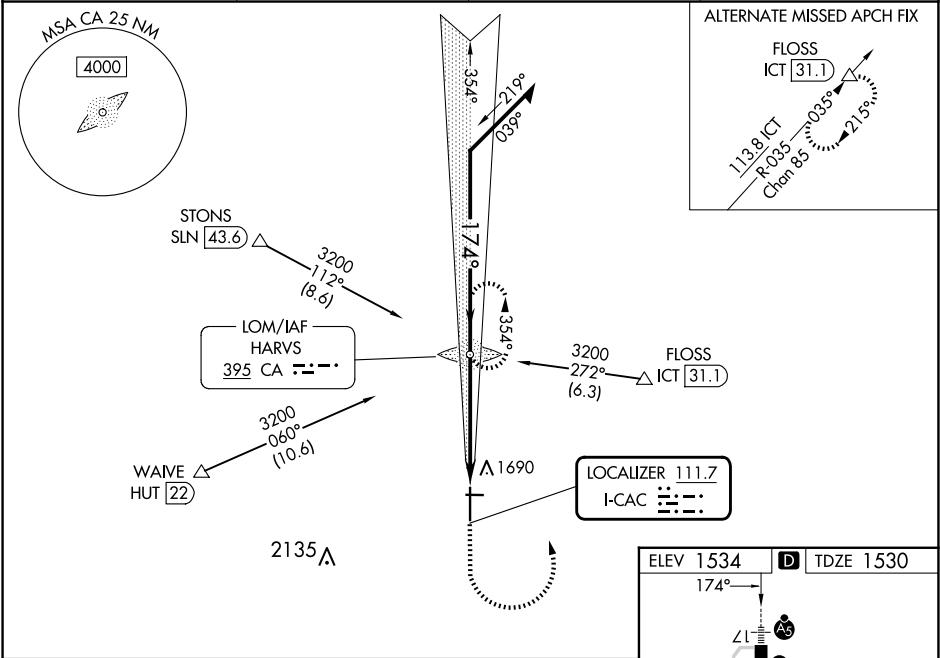
ADF required. DME required.

⚠ When local altimeter setting not received, use Wichita Dwight D Eisenhower Ntl altimeter setting: increase S-ILS 17 DA to 1817 feet; increase all MDAs 100 feet and visibility S-LOC 17 Cat C and D ½ SM and Circling Cat C ⅓ SM. For inop ALS, increase S-LOC 17 Cat C and D visibility to 1⅓ SM. For inop ALS when using Wichita Dwight D Eisenhower Ntl altimeter setting, increase S-ILS 17 visibility to ⅔ SM and S-LOC 17 Cat C and D to 1⅓ SM. Circling Rwy 8, 26 NA at night. Autopilot coupled approach NA below 2000.

MALSR

MISSED APPROACH: Climb to 2500 then climbing left turn to 3200 direct HARVS LOM and hold.

AWOS-3PT 123.875	WICHITA APP CON 125.5 306.2	CLNC DEL 126.55	UNICOM 123.0 (CTAF) 0
----------------------------	---------------------------------------	---------------------------	---------------------------------



CATEGORY	A	B	C	D
S-ILS 17	1730-½ 200 (200-½)			
S-LOC 17	2000-½ 470 (500-½)		2000-1 470 (500-1)	
CIRCLING	2000-1 466 (500-1)		2000-1½ 466 (500-1½)	2100-2 566 (600-2)

NC-2, 10 JUL 2025 to 07 AUG 2025

NC-2, 10 JUL 2025 to 07 AUG 2025