

BEND, OREGON

AL-5579 (FAA)

25163

|   |                        |   |
|---|------------------------|---|
| VORTAC DSD<br><b>117.6</b><br>Chan <b>123</b> | APP CRS<br><b>136°</b> | Rwy Ldg <b>5201</b><br>TDZE <b>3432</b><br>Apt Elev <b>3459</b> |
|---|------------------------|---|

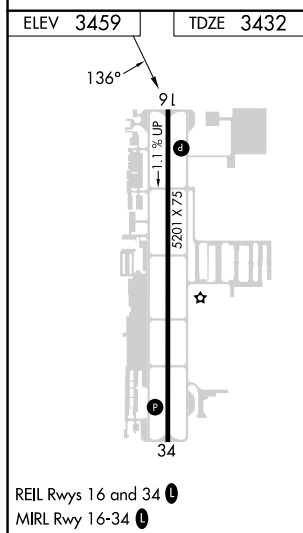
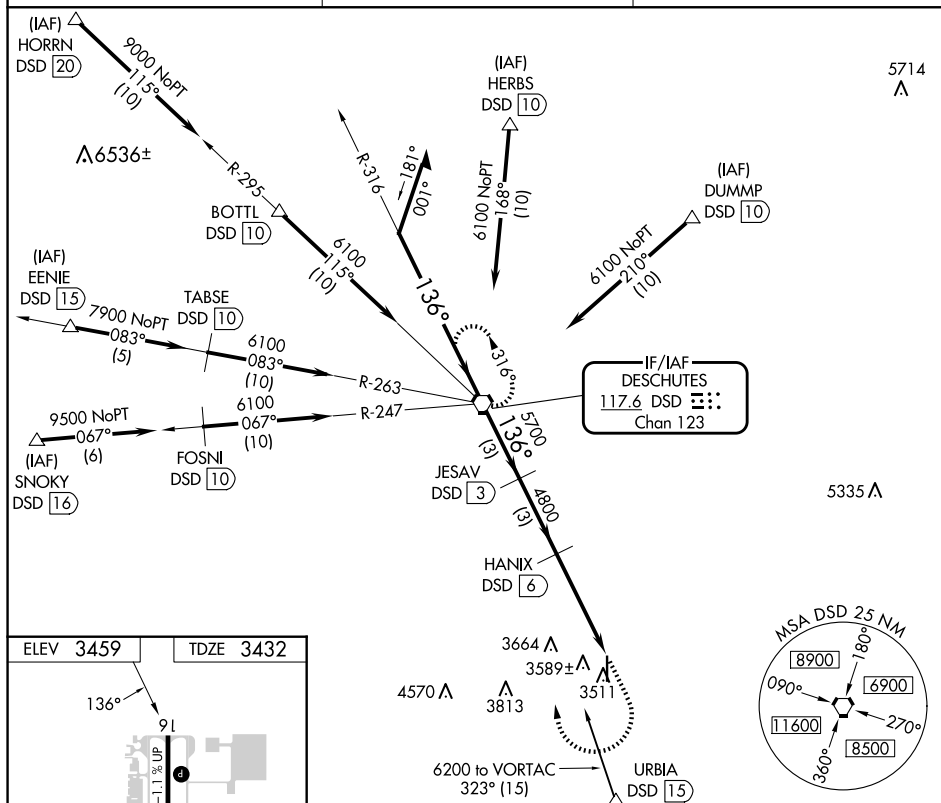
VOR RWY 16  
BEND MUNI (BDN)

DME required.

**T** Rwy 16 helicopter visibility reduction below  $\frac{3}{4}$  SM NA. When local altimeter setting not received, use Redmond altimeter setting and increase all MDAs 100 feet and increase S-16 visibility Cats C and D  $\frac{1}{4}$  SM, and Circling visibility Cat C  $\frac{1}{2}$  SM.

**MISSED APPROACH:** Climb to 4700 then climbing right turn to 7000 direct DSD VORTAC and hold, continue climb-in-hold to 7000.

|                          |   |                                 |
|--------------------------|---|---------------------------------|
| AWOS-3<br><b>134.425</b> | SEATTLE CENTER<br><b>126.15 269.475</b> | UNICOM<br><b>123.0 (CTAF) 0</b> |
|--------------------------|---|---------------------------------|



The diagram illustrates a VORTAC station with several key features:

- VOR Station:** Labeled "DSD VORTAC".
- TCH (Threshold Crossing Height):** Indicated as 50 feet.
- Distances:**
  - 6100 NM from the station to the first turn point.
  - 316° bearing to the first turn point.
  - 136° bearing to the second turn point.
  - 6100 NM distance between the two turn points.
  - 736° bearing to the third turn point.
  - 5700 NM distance between the second and third turn points.
  - 3 NM distance between the third turn point and the TCH.
  - 3 NM distance between the TCH and the DSD.
  - 4.1 NM distance between the DSD and the final destination.
- Altitudes:**
  - 4800 feet at the third turn point.
  - 4700 feet at the TCH.
  - 7000 feet at the DSD.
- Angles:**
  - 3.09° angle between the TCH and the DSD.
  - 3.00° angle between the TCH and the DSD (VGS Angle).
- Other Labels:**
  - "Remain within 10 NM" near the first turn point.
  - "JESAV DSD [3]" near the second turn point.
  - "HANIX DSD [6]" near the third turn point.
  - "DSD [10.1]" near the final destination.

| CATEGORY          | A                     | B                     | C  | D                          |
|-------------------|-----------------------|-----------------------|--|----------------------------|
| S-16              | 3880-1                | 448 (500-1)           | 3880-1 $\frac{3}{8}$                               | 448 (500-1 $\frac{3}{8}$ ) |
| <b>C</b> CIRCLING | 3960-1<br>501 (600-1) | 3980-1<br>521 (600-1) | 4120-1 $\frac{3}{4}$<br>661 (700-1 $\frac{3}{4}$ ) | 4640-3<br>1181 (1200-3)    |

BEND, OREGON  
Amdt 11 10AUG23

44°06'N-121°12'W

BEND MUNI (BDN)  
VOR RWY 16

NW-1, 10 JUL 2025 to 07 AUG 2025