

BEND, OREGON

AL-5579 (FAA)

25163

WAAS CH <b>81906</b> <b>W16A</b>	APP CRS <b>166°</b>	Rwy Ldg TDZE Apt Elev	<b>5201</b> <b>3432</b> <b>3459</b>
--	------------------------	-----------------------------	---

## RNAV (GPS) Z RWY 16

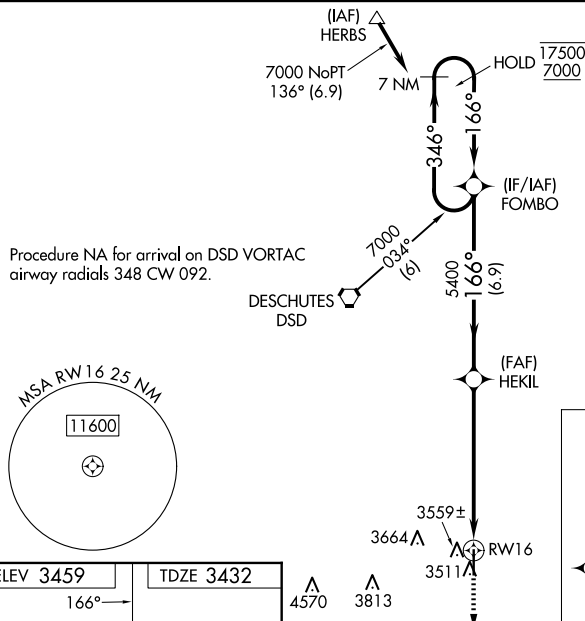
BEND MUNI (BDN)

RNP APCH - GPS.

- T** Baro-VNAV and VDP NA when using Redmond altimeter setting. Rwy 16 helicopter visibility reduction below  $\frac{3}{4}$  SM NA. For uncompensated Baro-VNAV systems, LNAV/VNAV NA below -21°C or above 54°C. When local altimeter setting not received, use Redmond altimeter setting: increase LPV DA to 3763 feet and all visibilities  $\frac{1}{4}$  SM; increase LNAV/VNAV DA to 3821 feet and all visibilities  $\frac{1}{4}$  SM; increase all MDAs 100 feet and LNAV visibility Cats C and D  $\frac{1}{2}$  SM, and Circling visibility Cat C  $\frac{1}{2}$  SM.

**MISSED APPROACH:** Climb to 7400 direct JOGON and on track 087° to MIKKO and on track 038° to REMTE and hold, continue climb-in-hold to 7400.

AWOS-3 <b>134.425</b>	SEATTLE CENTER <b>126.15 269.475</b>	UNICOM <b>123.0 (CTAF) 0</b>
--------------------------	---	---------------------------------



Procedure NA for arrival on DSD VORTAC  
airway radials 348 CW 092.

△ 5335

ELEV 3459

166°

91

1.1% UP

5201 X 75

34

TDZE 3432

MIRL Rwy 16-34

REIL Rwy 16 and 34

Diagram illustrating the FOMBO holding pattern. The pattern is defined by a series of turns and distances:

- Start of pattern (indicated by a dashed line and arrow).
- 1.2 NM to RW16 (indicated by a dashed line and arrow).
- 1.2 NM to RW16 (indicated by a solid line and arrow).
- 4.9 NM (indicated by a solid line and arrow).
- 6.9 NM (indicated by a solid line and arrow).
- 1.2 NM (indicated by a solid line and arrow).
- Turn angles: 166°, 346°, 166°.
- Altitudes: 5400, 5400, 5400.
- GP 3.00°, TCH 50°.
- VGSi and RNAV glidepath not coincident (VGSi Angle 3.00/TCH 38).

BEND, OREGON

Amdt 1 10AUG23

BEND MUNI (BDN)

44°06'N-121°12'W

RNAV (GPS) Z RWY 16

NW-1, 10 JUL 2025 to 07 AUG 2025

NW-1, 10 JUL 2025 to 07 AUG 2025