

WAAS CH 63217 W32A	APP CRS 315°	Rwy Idg 4800 TDZE 356 Apt Elev 358
--	------------------------	---

RNAV (GPS) RWY 32

RICHMOND COUNTY (R/CZ)

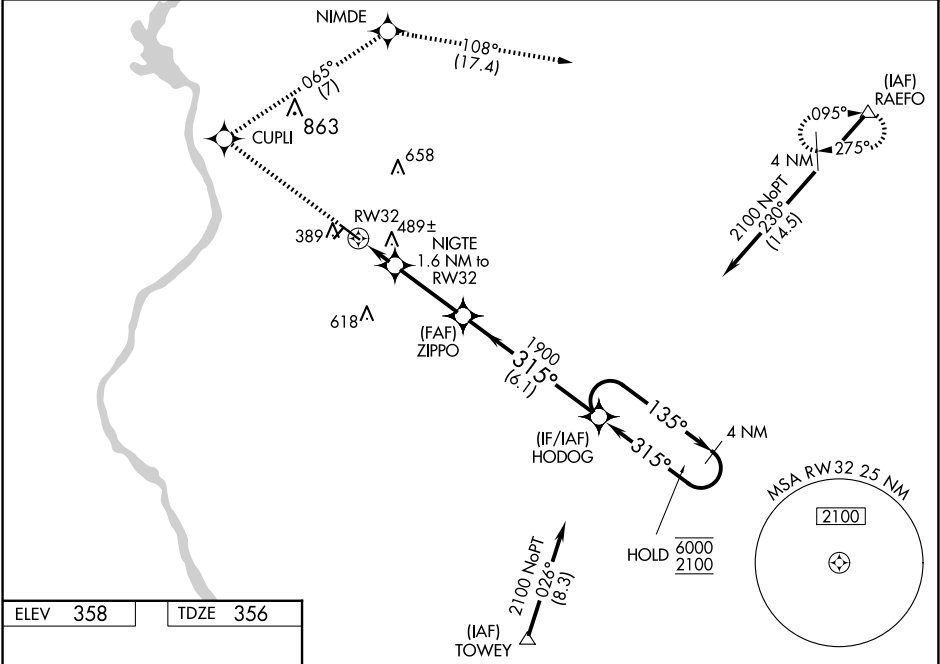
RNP APCH - GPS.

⚠

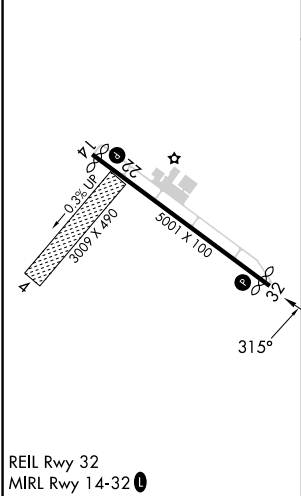
Circling NA to Rwy 4 and 22. Procedure NA at night. Rwy 32 helicopter visibility reduction below 1 NA. Baro-VNAV NA when using Mackall altimeter setting. For uncompensated Baro-VNAV systems, LNAV/VNAV NA below -1.5°C or above 54°C. When local altimeter setting not received, use Mackall altimeter setting: increase LPV DA to 679 feet; LNAV/VNAV DA to 833 feet and all visibilities ½ SM; increase all MDAs 40 feet and LNAV visibility Cat C/D ½ SM.

MISSED APPROACH: Climb to 2400 direct CUPLI and right turn on track 065° to NIMDE and on track 108° to RAEFO and hold.

AWOS-3 118.775	FAYETTEVILLE APP CON 127.8 343.725	UNICOM 122.8 (CTAF)
--------------------------	--	-------------------------------



ELEV 358	TDZE 356
----------	----------



2400	CUPLI	NIMDE	RAEFO	4 NM Holding Pattern
↑	⬠	tr 065°	tr 108°	HODOG
	NIGTE 1.6 NM to RW32	ZIPPO 1900		
	900	1900		
	1.6 NM	3 NM	6.1 NM	
CATEGORY	A	B	C	D
LPV DA	640-1	284 (300-1)		
LNAV/VNAV DA	794-1¼	438 (500-1¼)		
LNAV MDA	740-1	384 (400-1)	740-1⅛	384 (400-1⅛)
CIRCLING	800-1 442 (500-1)	820-1 462 (500-1)	960-1¾ 602 (700-1¾)	960-2 602 (700-2)