

WAAS CH <b>42717</b> <b>W20A</b>	APP CRS <b>196°</b>	Rwy Idg <b>5001</b> TDZE <b>571</b> Apt Elev <b>580</b>
--	------------------------	---

# RNAV (GPS) RWY 20

RNP APCH - GPS.

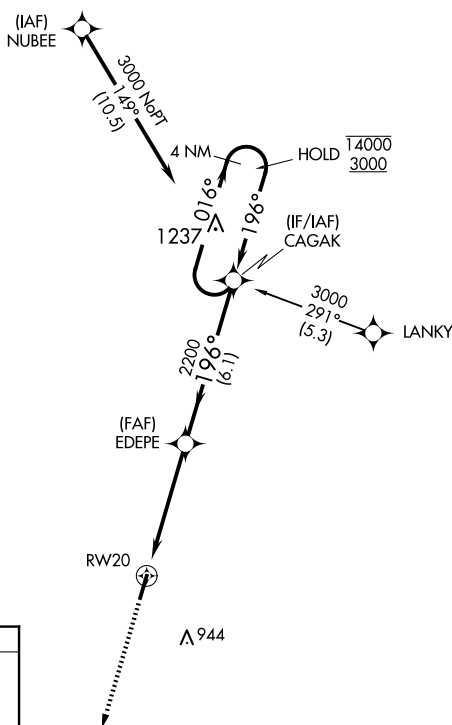
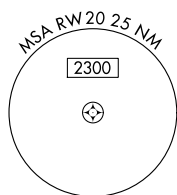
**T**  
**A** For uncompensated Baro-VNAV systems, LNAV/VNAV NA below -16°C or above 54°C.

MISSED APPROACH: Climb to 2300 direct  
WASED and hold.

AWOS-3  
118.825

MEMPHIS CENTER  
134.65 316.15

UNICOM  
**123.0** (CTAF)



MISSED APCH FIX

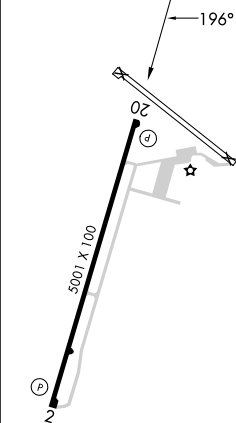
WAXD

19.6°

16°

4 nm

ELEV 580		TDZE 571
----------	--	----------



REIL Rwy 2 and 20  
MIRL Rwy 2-20

[illegible]

CATEGORY	A	B	C	D
LPV DA	821-1	250 (300-1)		
LNAV/VNAV DA	917-1¼	346 (400-1¼)		
LNAV MDA	1060-1 489 (500-1)	1060-1¾ 489 (500-1¾)	1060-1½ 489 (500-1½)	
CIRCLING	1080-1 500 (500-1)	1300-2 720 (800-2)	1300-2¼ 720 (800-2¼)	

## RNAV (GPS) RWY 20