

PARIS, TENNESSEE

AL-5576 (FAA)

22279

WAAS CH 48817 W02A	APP CRS 016°	Rwy Idg 5001 TDZE 580 Apt Elev 580
--	------------------------	---

APP CRS
016°

Rwy Idg	5001
TDZE	580
Apt Elev	580

RNAV (GPS) RWY 2

HENRY COUNTY (PHT)

HENRY COUNTY (PHT)

RNP APCH - GPS.



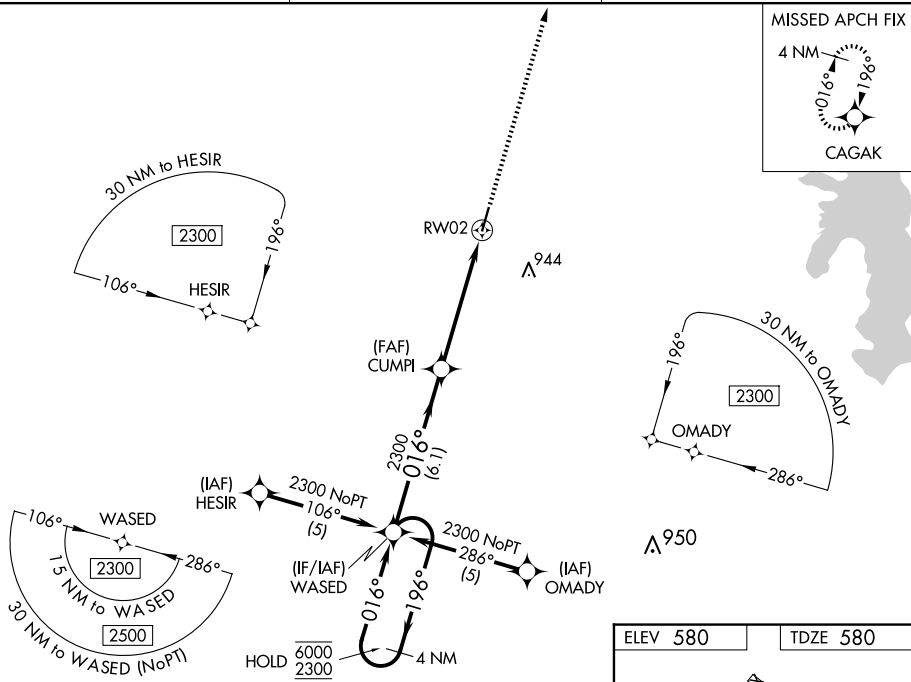
For uncompensated Baro-VNAV systems, LNAV/VNAV NA below -16°C or above 54°C.

MISSED APPROACH: Climb to 3000 direct CAGAK and hold.

AWOS-3
118.825

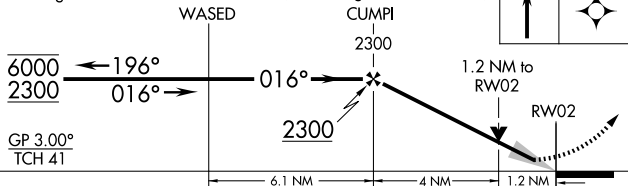
MEMPHIS CENTER
134.65 316.15

UNICOM
123.0 (CTAF)

4 NM
Holding Pattern

VGSI and RNAV glidepath not coincident
(VGSI Angle 3.00/TCH 26).

3000	CAGAK
------	-------

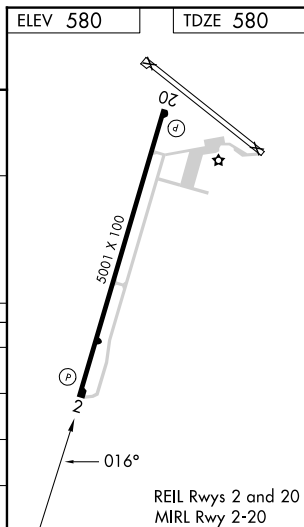


CATEGORY		A		B		C		D	
LPV	DA	780-3 $\frac{3}{4}$		200 (200-3 $\frac{3}{4}$)					
LNAV/ VNAV	DA	1087-13 $\frac{1}{8}$		507 (600-13 $\frac{1}{8}$)					
LNAV	MDA	1020-1	440 (500-1)	1020-1 $\frac{1}{4}$		440 (500-1 $\frac{1}{4}$)			
CIRCLING		1080-1	500 (500-1)	1300-2 720 (800-2)		1300-2 $\frac{1}{4}$ 720 (800-2 $\frac{1}{4}$)			

PARIS, TENNESSEE
Orig-C 06OCT22

36°20'N-88°23'W

HENRY COUNTY (PHT)
RNAV (GPS) RWY 2



SE-1, 10 JUL 2025 to 07 AUG 2025