

HOUSTON, TEXAS

AL-5573 (FAA)

24109

WAAS CH 90219 W19A	APP CRS 192°	Rwy Idg 5000 TDZE 237 Apt Elev 245
--	------------------------	---

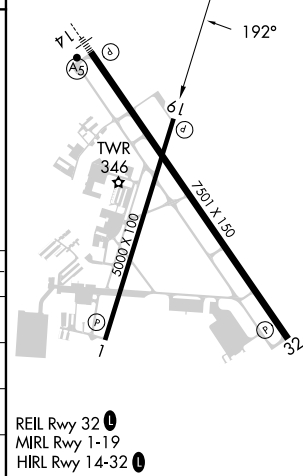
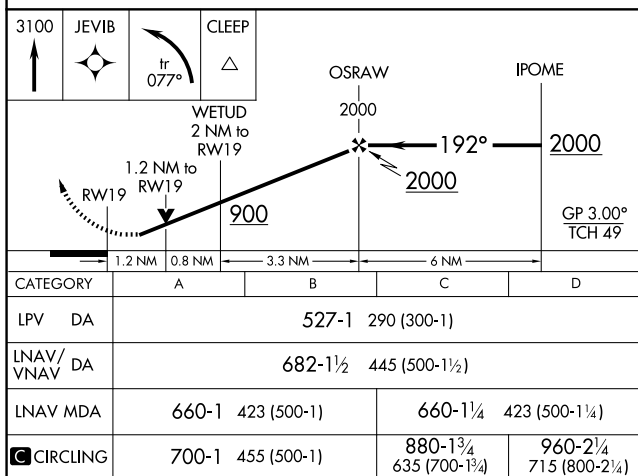
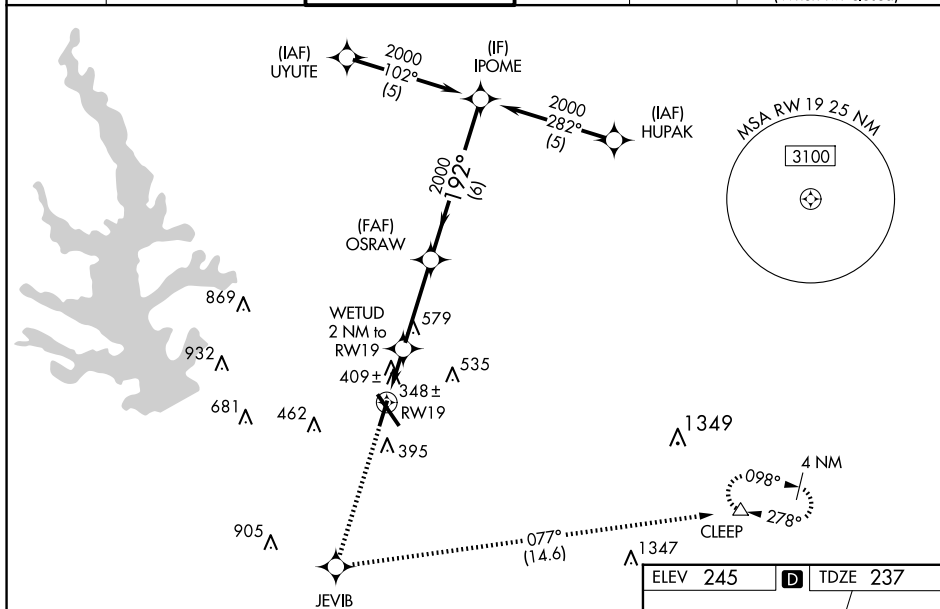
RNAV (GPS) RWY 19
CONROE/NORTH HOUSTON RGNL (CXO)

RNP APCH - GPS.

⚠ Rwy 19 helicopter visibility reduction below $\frac{3}{4}$ SM NA. For uncompensated Baro-VNAV systems, LNAV/VNAV NA below -15°C or above 54°C. When local altimeter setting not received, use David Wayne Hooks Meme! altimeter setting and increase LPV DA to 584 feet and all visibilities $\frac{1}{8}$ SM. Increase LNAV/VNAV DA to 739 feet; increase all MDAs 60 feet and LNAV visibility Cat C/D $\frac{1}{8}$ SM, and Circling visibility Cat C/D $\frac{1}{4}$ SM. Baro-VNAV and VDP NA when using David Wayne Hooks Meme! altimeter setting.

MISSED APPROACH: Climb to 3100 direct JEVIB and left turn on track 077° to CLEEP and hold.

ATIS 118.325	HOUSTON APP CON 119.7 281.4	CONROE TOWER ★ 124.125 (CTAF) 0	GND CON 120.45	CLNC DEL 120.45	CLNC DEL 119.55 (When twr closed)
------------------------	---------------------------------------	---	--------------------------	---------------------------	--



HOUSTON, TEXAS
Orig-B 18APR24

CONROE/NORTH HOUSTON RGNL (CXO)
RNAV (GPS) RWY 19

30°21'N-95°25'W

SC-5, 10 JUL 2025 to 07 AUG 2025