

HOUSTON, TEXAS

AL-5573 (FAA)

21336

WAAS CH 86719 W01A	APP CRS 012°	Rwy Idg 5000 TDZE 237 Apt Elev 245
----------------------------------------	------------------------	---------------------------------------------------------------

RNAV (GPS) RWY 1

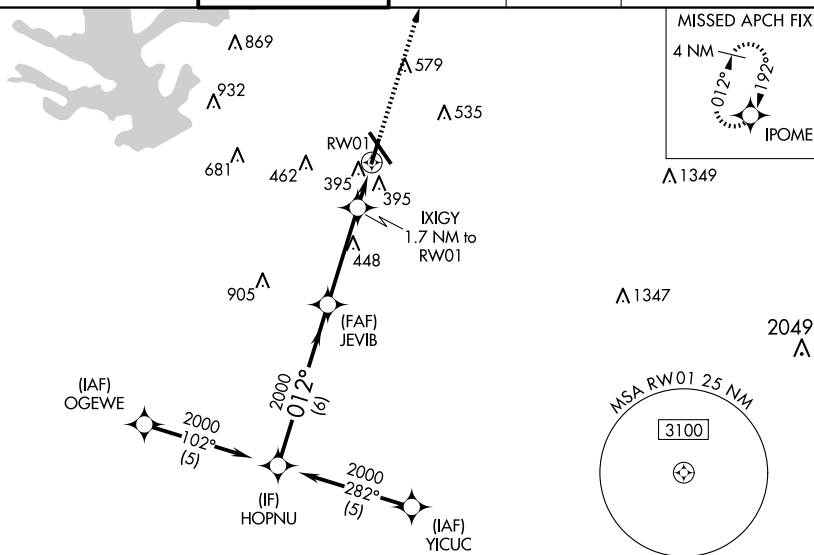
CONROE/NORTH HOUSTON RGNL (CX0)



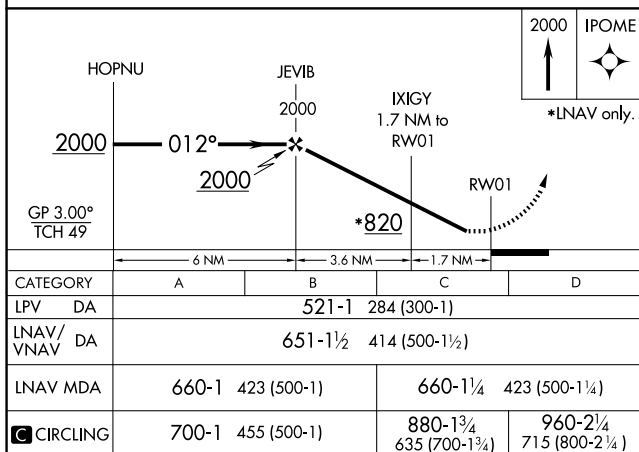
For uncompensated Baro-VNAV systems, LNAV/VNAV NA below -15°C (5°F) or above 48°C (118°F). DME/DME RNP-0.3 NA. Rwy 1 helicopter visibility reduction below $\frac{3}{4}$ SM NA.

MISSED APPROACH: Climb to 2000 direct IPOME and hold.

ATIS 118.325	HOUSTON APP CON 119.7 281.4	CONROE TOWER★ 124.125 (CTAF) 0	GND CON 120.45	CLNC DEL 120.45	CLNC DEL 119.55 (When twr closed)
------------------------	---------------------------------------	------------------------------------------	--------------------------	---------------------------	------------------------------------------------



SC-5, 10 JUL 2025 to 07 AUG 2025



HOUSTON, TEXAS
Orig-A 22JUN17

CONROE/NORTH HOUSTON RGNL (CX0)

RNAV (GPS) RWY 1

30°21'N-95°25'W

SC-5, 10 JUL 2025 to 07 AUG 2025

SC-5, 10 JUL 2025 to 07 AUG 2025