

HOUSTON, TEXAS

AL-5573 (FAA)

21336

LOM CX <u>281</u>	APP CRS 140°	Rwy Idg 7501 TDZE 236 Apt Elev 245
-----------------------------	------------------------	---

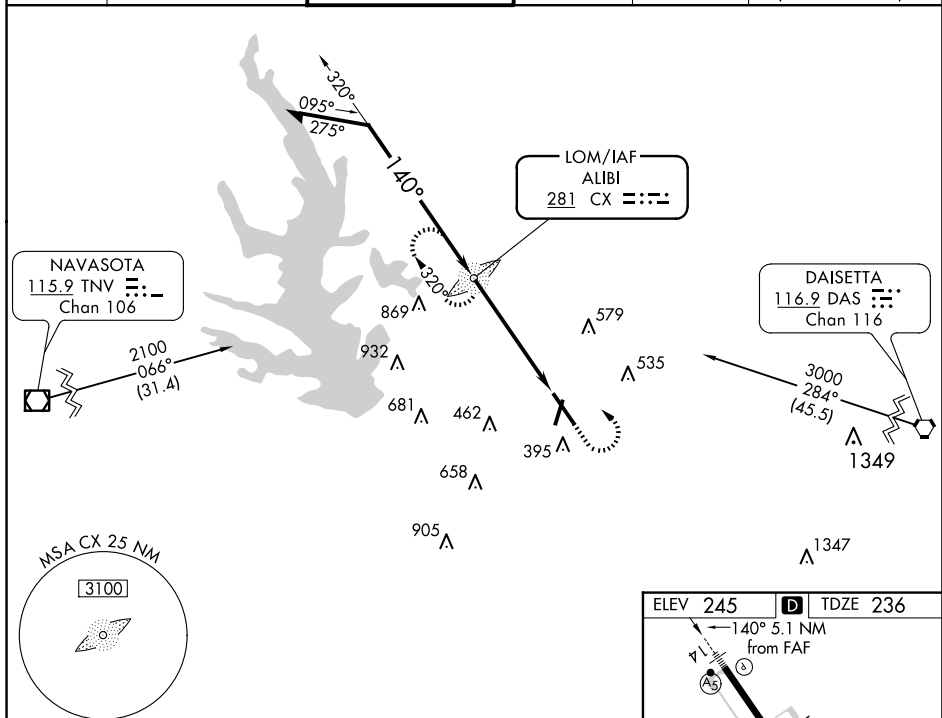
NDB RWY 14

CONROE/NORTH HOUSTON RGNL (CX0)



MISSED APPROACH: Climb to 1000 then climbing left turn to 2100 direct ALBI LOM and hold.

ATIS 118.325	HOUSTON APP CON 119.7 281.4	CONROE TOWER * 124.125 (CTAF) 0	GND CON 120.45	CLNC DEL 120.45	CLNC DEL 119.55 (When twr closed)
------------------------	---------------------------------------	---	--------------------------	---------------------------	--



VGSI and descent angles not coincident (VGSI Angle 3.00/TCH 47).

CX LOM

1000

2100



Remain
within 10 NM

2100

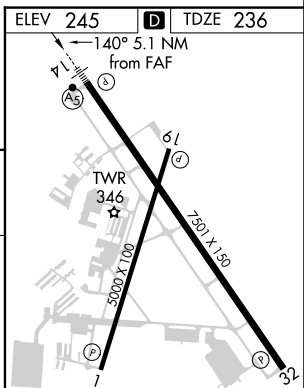
1

40 →

2100

1

CATEGORY	A	B	C	D	FAF to MAP 5.1 NM					
S-14	880-3/4	644 (700-3/4)	880-13/8	644 (700-13/8)	FAF to MAP 5.1 NM					
CIRCLING	880-1	635 (700-1)	880-17/8 635 (700-17/8)	960-2 715 (800-2)	Knots	60	90	120	150	180
					Min:Sec	5:06	3:24	2:33	2:02	1:42



HOUSTON, TEXAS
Amdt 3C 25APR19

CONROE/NORTH HOUSTON RGNL (CX0)

30°21'N-95°25'W

NDB RWY 14

SC-5, 10 JUL 2025 to 07 AUG 2025