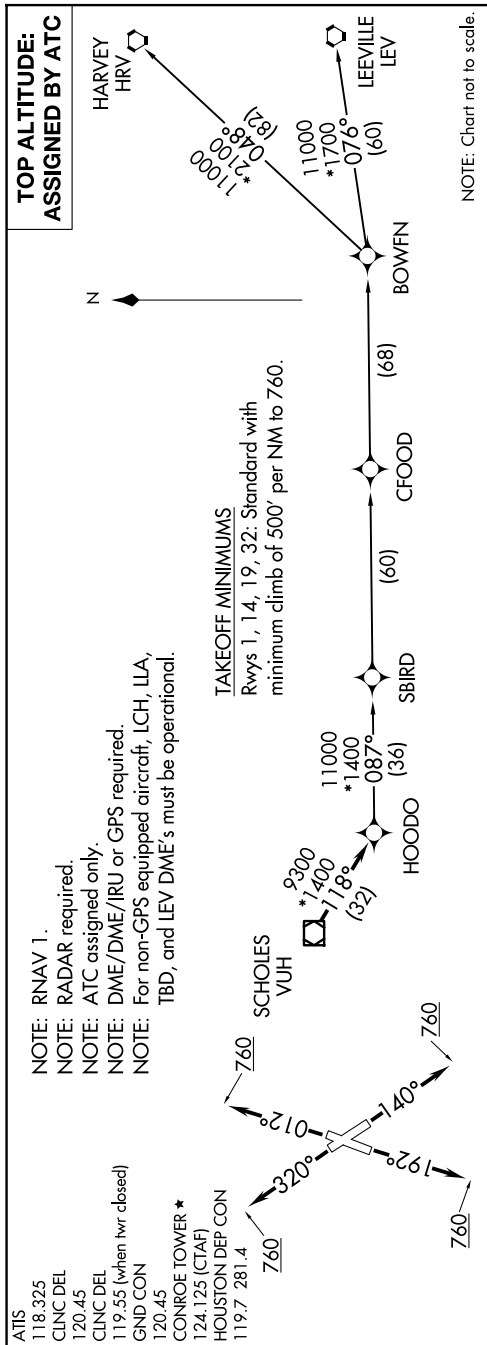


HOODO SEVEN DEPARTURE (RNAV)
(HOODO7.HOODO) 07OCT21

CONROE/NORTH HOUSTON RGNL (CXO)



NOTE: Chart not to scale.

DEPARTURE ROUTE DESCRIPTION

TAKEOFF RUNWAY 1: Climb on heading 012° to 760, for RADAR vectors to VUH VOR/DME, thence
TAKEOFF RUNWAY 14: Climb on heading 140° to 760, for RADAR vectors to VUH VOR/DME, thence
TAKEOFF RUNWAY 19: Climb on heading 192° to 760, for RADAR vectors to VUH VOR/DME, thence
TAKEOFF RUNWAY 32: Climb on heading 320° to 760, for RADAR vectors to VUH VOR/DME, thence

..... on track 118° to HOODO, then on (transition). Maintain ATC assigned altitude.
Expect filed altitude 10 minutes after departure.

BOWFN TRANSITION (HOODO7.BOWFN)
CCFOOD TRANSITION (HOODO7.CFOOD)
HARVEY TRANSITION (HOODO7.HRV)
LEEVILLE TRANSITION (HOODO7.LEV)
SBIRD TRANSITION (HOODO7.SBIRD)