

WAAS CH 56627 W19A	APP CRS 187°	Rwy Idg 6502 TDZE 130 Apt Elev 130
--	------------------------	---

RNAV (GPS) RWY 19
HARRELL FLD (CDH)

HARRILL FID (CDH)

RNP APCH-GPS.



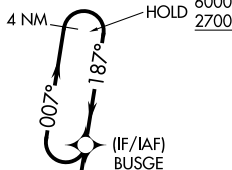
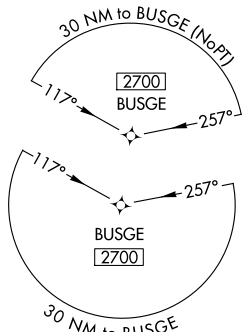
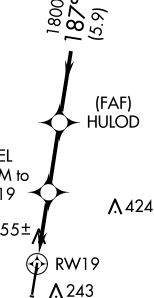
Rwy 19 helicopter visibility reduction below $\frac{3}{4}$ SM NA. Baro-VNAV NA when using El Dorado altimeter setting. For uncompensated Baro-VNAV systems, LNAV/VNAV NA below -15°C or above 54°C. When local altimeter setting not received, use El Dorado altimeter setting and LPV DA to 517 feet, LNAV/VNAV DA to 503 feet and all MDA 80 feet; increase LPV and all Cats visibility $\frac{1}{2}$ SM, LNAV Cats C and D, and Circling Cat DA $\frac{1}{2}$ SM.

MISSED APPROACH:
Climb to 2700 direct
URAME and hold.

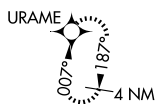
AWOS-3
125.2

FORT WORTH CENTER
128.2 269.1

UNICOM
122.7 (CTAF) **L**

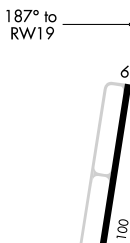
^Λ₇₄₁

MISSED APCH FIX

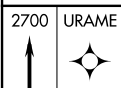


ELEV 130		TDZE 130
----------	--	----------

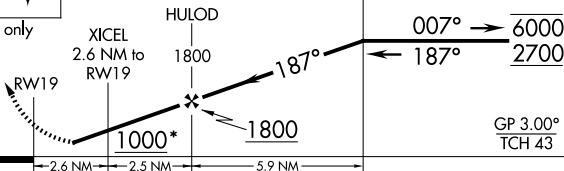
TDZE 130



A 658



* LNAV or



CATEGORY	A	B	C	D
LPV DA	440-1 310 (400-1)			
LNAV/VNAV DA	426-1 296 (300-1)			
LNAV MDA	520-1 390 (400-1)		520-1½ 390 (400-1½)	
CIRCLING	560-1 430 (500-1)	580-1 450 (500-1)	580-1½ 450 (500-1½)	960-2¾ 830 (900-2¾)

CAMDEN, ARKANSAS

Amdt 1C 20MAY21

HARRELL FLD (CDH)

33°37'N-92°46' W

RNAV (GPS) RWY 19