

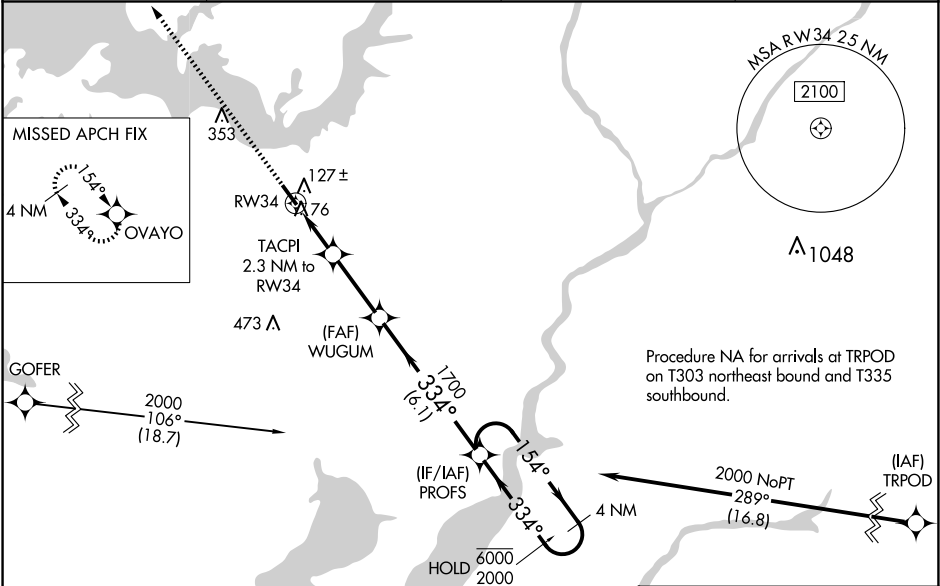
WAAS CH 45540 W34A	APP CRS 334°	Rwy Idg 4477 TDZE 20 Apt Elev 20
--	------------------------	---

RNAV (GPS) RWY 34

CAMBRIDGE-DORCHESTER RGNL (CDE)

RNP APCH - GPS.	MISSED APPROACH: Climb to 2000 direct OVAYO and hold.
<div><div>▼</div><div>▲</div></div> <div>Rwy 34 helicopter visibility reduction below ¾ SM NA. For uncompensated Baro-VNAV systems, LNAV/VNAV NA below -15°C or above 54°C. Circling Rwy 16 NA at night.</div>	

AWOS-3 120.675	PATUXENT APP CON ★ 121.0 250.3	UNICOM 122.7 (CTAF)	121.9
--------------------------	--	-------------------------------	--------------



ELEV 20		TDZE 20		
2000 ↑	OVAYO ✦	VGSI and RNAV glidepath not coincident (VGSI Angle 3.25/TCH 35).		
<p>WUGUM 1700 TACPI 2.3 NM to RW34 1 NM to RW34 RW34 800 1700 154° → 6000 ← 334° 2000 GP 3.00° TCH 57 6.1 NM</p>				
CATEGORY	A	B	C	D
LPV DA	286-7 ⁸ / ₈		266 (300-7 ⁸ / ₈)	
LNAV/VNAV DA	380-1		360 (400-1)	
LNAV MDA	380-1		360 (400-1)	
CIRCLING	440-1 420 (500-1)	480-1 460 (500-1)	660-1 ³ / ₄ 640 (700-1 ³ / ₄)	780-2 ¹ / ₂ 760 (800-2 ¹ / ₂)

4477 x 75
34
334°

MIRL Rwy 16-34 ①
REIL Rwy 16 and 34 ①

