

24137

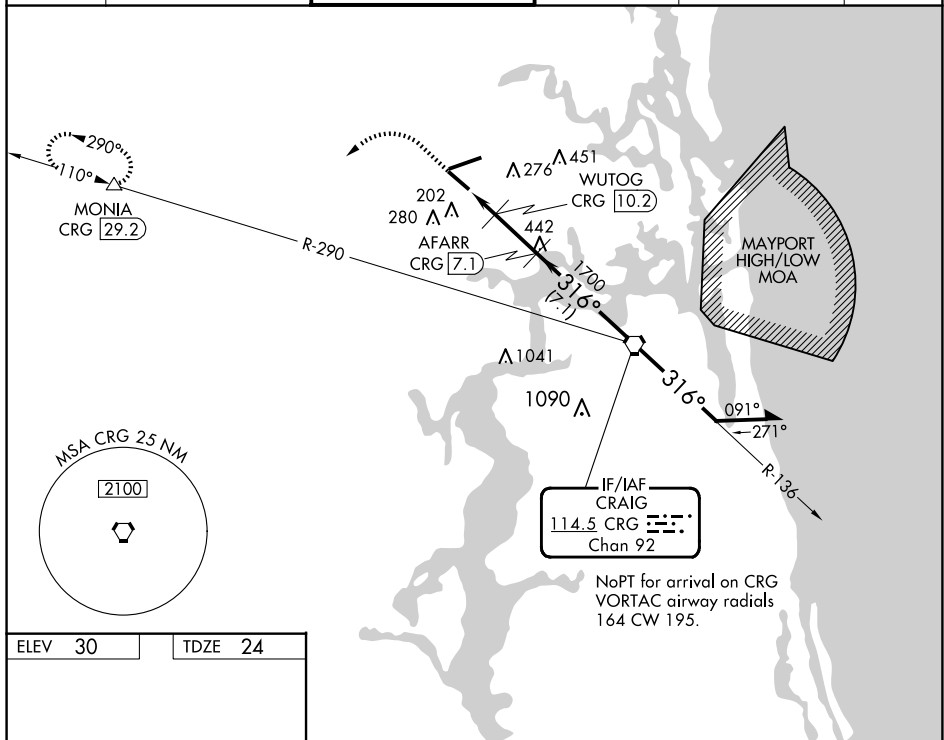
VORTAC CRG <b><u>114.5</u></b> Chan <b>92</b>	APP CRS <b>316°</b>	Rwy Idg <b>7701</b> TDZE <b>24</b> Apt Elev <b>30</b>
---	------------------------	---

VOR/DME RWY 32  
JACKSONVILLE INTL (JAX)

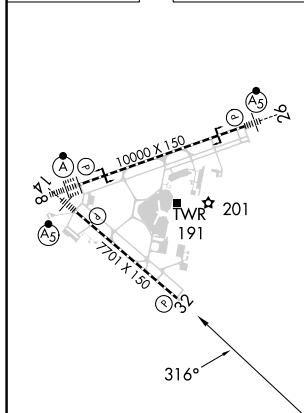
**T** Rwy 32 helicopter visibility reduction by below  $\frac{3}{4}$  SM NA.  
**A** Cat E procedure turn NA.

**MISSED APPROACH:** Climb to 1000 then climbing left turn to 3000 on heading 250° and on CRG VORTAC R-290 to MONIA/CRG 29.2 DME and hold.

D-ATIS 125.85	JACKSONVILLE APP CON 119.0 269.9	JACKSONVILLE TOWER 118.3 317.7	GND CON 121.9 348.6	CLNC DEL 119.5 290.275	CPDLC
------------------	-------------------------------------	-----------------------------------	------------------------	---------------------------	-------



ELEV 30		TDZE 24
---------	--	---------



REIL Rwy 32  
TDZ/CL Rwy 8, 14, and 26  
HIRL Rwy 8-26 and 14-32

1000 ↑	3000 hdg 250°	CRG R-290	MONIA △	VGSI and ILS glidepath not coincident (VGSI Angle 3.05/TCH 68).	
<p>AFARR CRG 7.1</p> <p>WUTOG CRG 10.2</p> <p>CRG 11.1</p> <p>CRG 12.2</p> <p>3.00° TCH 50</p> <p>720</p> <p>1700</p> <p>6000</p> <p>CRG VORTAC</p> <p>136°</p> <p>316°</p> <p>2100</p> <p>Remain within 10 NM</p> <p>1.1 0.9 3.1 NM 7.1 NM</p>					
CATEGORY	A	B	C	D	E
S-32	460-1	436 (500-1)	460-1¼ 436 (500-1¼)		
CIRCLING	520-1	490 (500-1)	580-1½ 550 (600-1½)	580-2 550 (600-2)	760-2½ 730 (800-2½)

JACKSONVILLE, FLORIDA  
Amdt 2D 16MAY24

30°30'N-81°41'W

JACKSONVILLE INTL (JAX)  
VOR/DME RWY 32

SE-3, 10 JUL 2025 to 07 AUG 2025