

APP CRS
257°

Rwy Idg
TDZE
Apt Elev

10000
27
30

RNAV (RNP) Y RWY 26

JACKSONVILLE INTL (JAX)

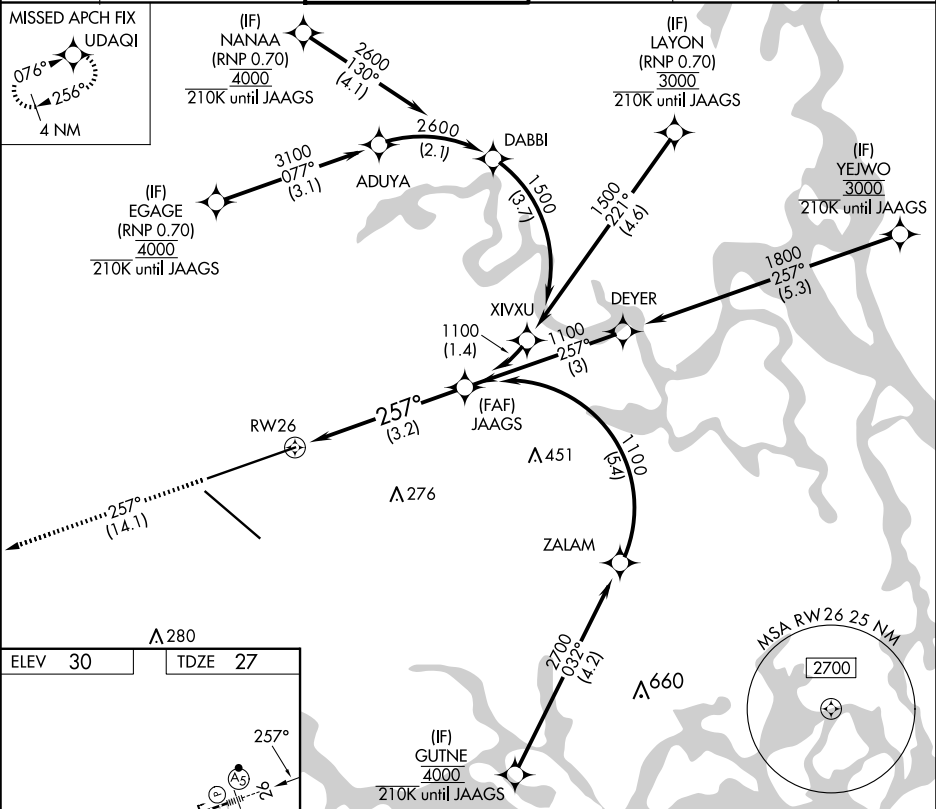
RNP AR APCH-GPS.

For uncompensated Baro-VNAV systems, procedure NA below -5°C or above 54°C.

MALSR

MISSED APPROACH: Climb to 2000 on track 257° to UDAQI and hold.

| | | | | | |
|--------|----------------------|--------------------|-------------|---------------|-------|
| D-ATIS | JACKSONVILLE APP CON | JACKSONVILLE TOWER | GND CON | CLNC DEL | CPDLC |
| 125.85 | 119.0 269.9 | 118.3 317.7 | 121.9 348.6 | 119.5 290.275 | |



ELEV 30 TDZE 27

REIL Rwy 32

TDZ/CL Rwy 8, 14, and 26

HIRL Rwy 8-26 and 14-32

2000 UDAQI

tr 257°

VGSI and RNAV glidepath not coincident (VGSI Angle 3.00/TCH 70).

See planview for multiple IF locations.

RW26

JAAGS 1100

257°

1100

GP 3.00° TCH 49

3.2 NM

| | | | | |
|-------------|---------------------|---|---|---|
| CATEGORY | A | B | C | D |
| RNP 0.30 DA | 419/35 392 (400-5%) | | | |

AUTHORIZATION REQUIRED