

APP CRS	Rwy Idg	7701
137°	TDZE	27
	Apt Elev	29

RNAV (RNP) Y RWY 14
JACKSONVILLE INTL (JAX)

T For uncompensated Baro-VNAV systems, procedure NA below -5°C (23°F) or above 54°C (130°F). GPS required. For inoperative MALSR, increase RNP 0.30 all Cats visibility to 1½ mile.



MISSED APPROACH: Climb to 500 then climbing left turn to 2000 direct YEW and hold

D-ATIS
125.85

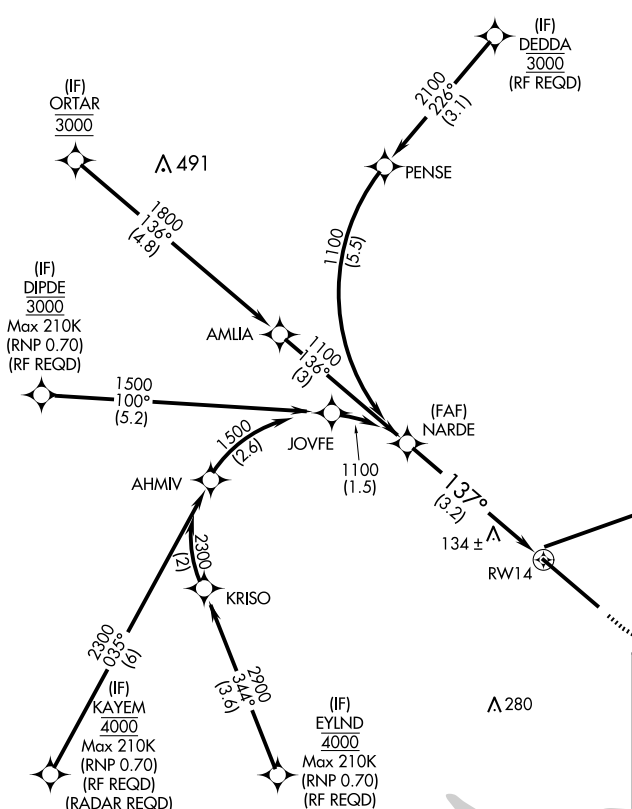
JACKSONVILLE APP CON
119.0 269.9

JACKSONVILLE TOWER
118.3 317.7

GND CON
121.9 348.6

CLNC DEL
119.5 290.275

CPDLC



VGSI and RNAV glidepath not coincident
NABDE (VGSI Angle 3.00/TCH 70).

NARDE

115

$$\frac{\text{GP } 3.00^\circ}{\text{TCH } 54}$$

See planview for multiple IF locations.

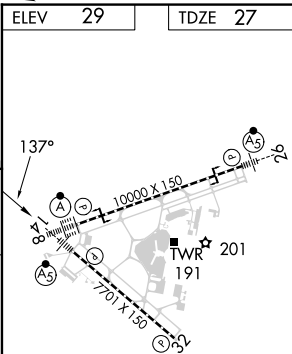
RW14

A horizontal line with an arrow pointing to the left at its right end. The text "3.2 nm" is written to the right of the arrowhead.

500

2000

YEJW



CATEGORY	A	B	C	D
RNP 0.30 DA		389-1	362 (400-1)	