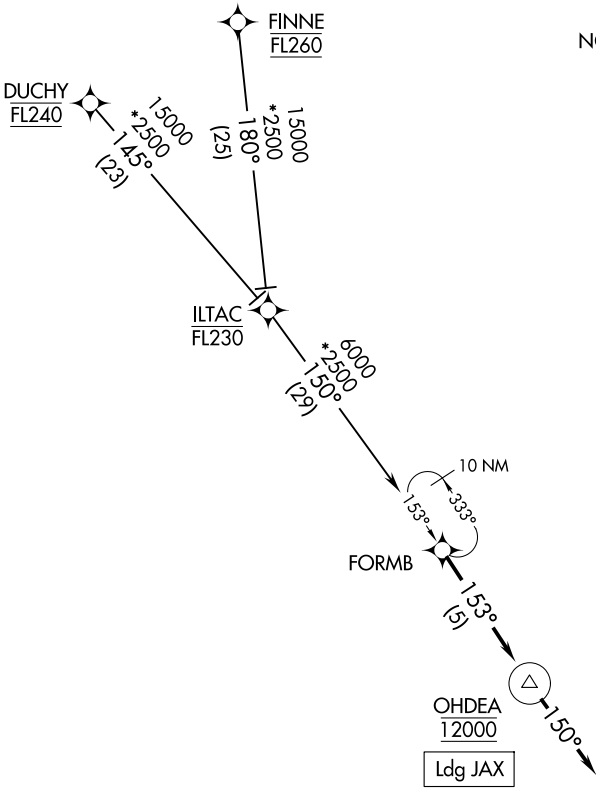


RNAV 1 - DME/DME/IRU or GPS.

RADAR required.

JACKSONVILLE APP CON  
119.0 127.0 269.9 292.15 (270°-090°)  
127.775 377.075 (181°-269°)  
124.9 308.4 (091°-180°)  
D-ATIS 125.85

NOTE: Jet aircraft only.



NOTE: Chart not to scale.

ARRIVAL ROUTE DESCRIPTION

DUCHY TRANSITION (DUCHY.OHDEA2)  
FINNE TRANSITION (FINNE.OHDEA2)

From FORMB on track 153° to cross OHDEA at 12000, then on track 150°.  
Expect RADAR vectors to final approach course.