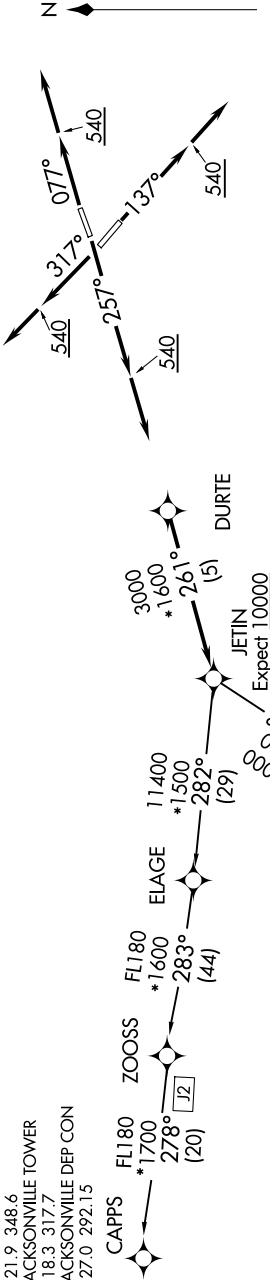


SE-3, 10 JUL 2025 to 07 AUG 2025

D-ATIS
125.85
CLINC DEL
119.5 290.275
CPDLC
GND CON
121.9 348.6
JACKSONVILLE TOWER
118.3 317.7
JACKSONVILLE DEP CON
127.0 292.15

JETIN TWO DEPARTURE (RNAV)
(JETIN2.JETIN) 08JAN15

TOP ALTITUDE:
3000



- NOTE: RNAV 1
NOTE: Turbojets only.
NOTE: DME/DME/IRU or GPS required.
NOTE: Radar required.
NOTE: If unable to accept climb rate, advise ATC on initial contact.

TAKEOFF MINIMUMS:
Rwys 8, 14, 26, 32: Standard with
minimum climb of 500' per NM to 540.

NOTE: Chart not to scale.

DEPARTURE ROUTE DESCRIPTION

TAKEOFF RUNWAY 8: Climb heading 077° to 540, then climb to assigned altitude on heading 077° or as assigned by ATC, thence. . . .
TAKEOFF RUNWAY 14: Climb heading 137° to 540, then climb to assigned altitude on heading 137° or as assigned by ATC, thence. . . .
TAKEOFF RUNWAY 26: Climb heading 257° to 540, then climb to assigned altitude on heading 257° or as assigned by ATC, thence. . . .
TAKEOFF RUNWAY 32: Climb heading 317° to 540, then climb to assigned altitude on heading 317° or as assigned by ATC, thence. . . .

. . . . expect radar vectors to DURTE, then on track 261° to JETIN.
Maintain 3000 or as assigned by ATC, expect clearance to filed altitude within ten (10) minutes after departure.

CAPPS TRANSITION (JETIN2 CAPPS):
JAYJA TRANSITION (JETIN2.JAYJA):

JACKSONVILLE, FLORIDA
JACKSONVILLE INTL (JAX)

SE-3, 10 JUL 2025 to 07 AUG 2025