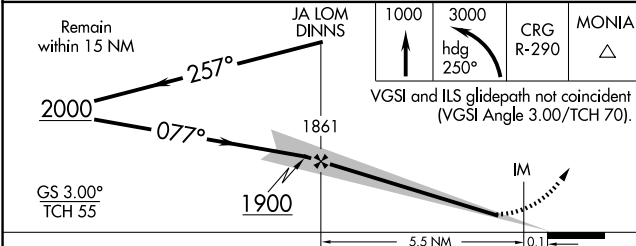
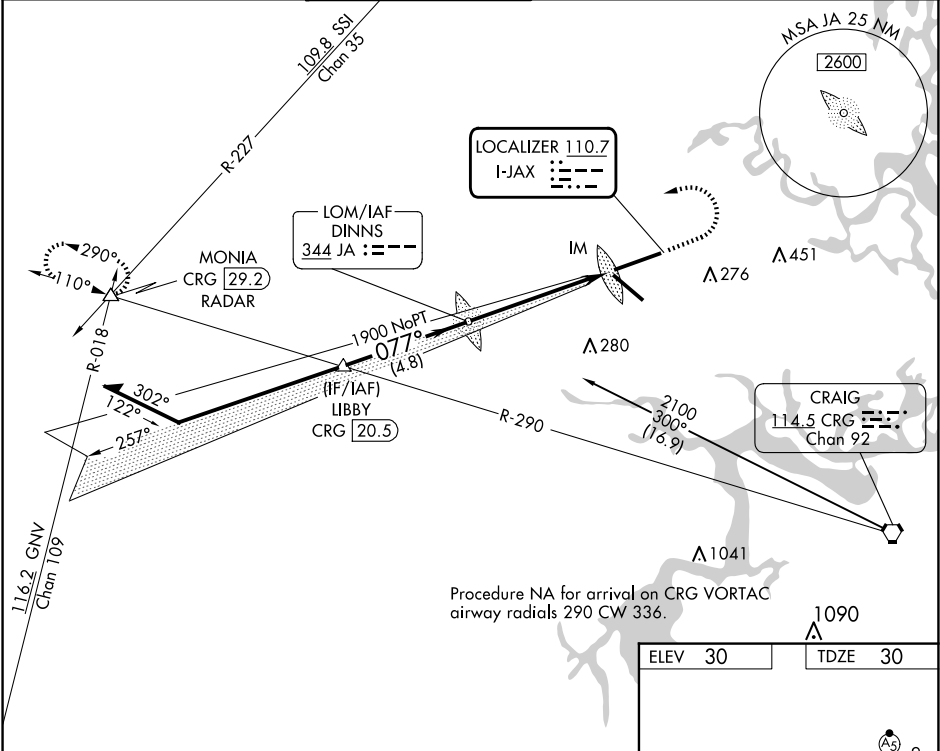


LOC I-JAX 110.7	APP CRS 077°	Rwy Idg 10000 TDZE 30 Apt Elev 30
---------------------------	------------------------	--

ILS Y or LOC Y RWY 8
JACKSONVILLE INTL (JAX)

<div><div>▼</div><div>▲</div></div>	For inop ALS, increase S-ILS 8 Cat E visibility to RVR 4000 and S-LOC 8 Cat E visibility to 1½ SM.		ALS F-2 <div><div>A</div><div></div></div>	MISSED APPROACH: Climb to 1000 then climbing left turn to 3000 on heading 250° and on CRG VORTAC R-290 to MONIA INT/CRG 29.2 DME/RADAR and hold.		
	D-ATIS 125.85	JACKSONVILLE APP CON 119.0 269.9	JACKSONVILLE TOWER 118.3 317.7	GND CON 121.9 348.6	CLNC DEL 119.5 290.275	CPDLC



CATEGORY	A	B	C	D	E
S-ILS 8	230/18 200 (200-½)				
S-LOC 8	480/24	450 (500-½)	480/45	450 (500-¾)	
CIRCLING	520-1	490 (500-1)	580-1½ 550 (600-1½)	580-2 550 (600-2)	760-2½ 730 (800-2½)

ELEV 30	TDZE 30				
<p>Diagram illustrating the approach area for Runway 32. The diagram shows the runway (077°) and taxiway (A5). The distance from the FAF to the MAP is 5.6 NM. The diagram also shows the TDZ/CL Rwy 8, 14, and 26, and the HIRL Rwy 8-26 and 14-32. The diagram includes a scale bar for 10000 X 150 and 7701 X 130. The diagram also shows the TWR 191 and 201. The diagram includes a scale bar for 10000 X 150 and 7701 X 130. The diagram also shows the TWR 191 and 201.</p>					
REIL Rwy 32 TDZ/CL Rwys 8, 14, and 26 HIRL Rwys 8-26 and 14-32					
FAF to MAP 5.6 NM					
Knots	60	90	120	150	180
Min:Sec	5:36	3:44	2:48	2:14	1:52

SE-3, 10 JUL 2025 to 07 AUG 2025

SE-3, 10 JUL 2025 to 07 AUG 2025