

LOC I-CZH <b>110.5</b>	APP CRS <b>137°</b>	Rwy ldg <b>7701</b> TDZE <b>27</b> Apt Elev <b>30</b>
---------------------------	------------------------	---

ILS Y or LOC Y RWY 14  
JACKSONVILLE INTL (JAX)

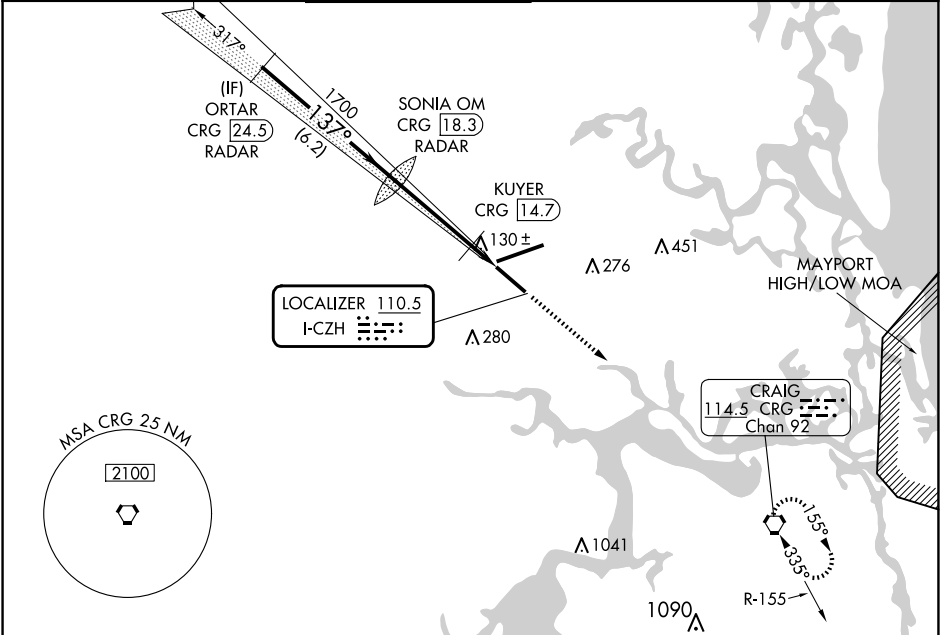
RADAR required for procedure entry. DME or RADAR required.

Autopilot coupled approach NA below 750 feet MSL. Rwy 14 helicopter visibility reduction below ¾ SM NA. For inop ALS increase S-ILS 14 visibility all Cats to ¾ SM, and increase S-LOC 14 Cats A and B visibility and KUYER Fix minimums S-LOC 14 visibility all Cats to 1 SM.

MALSR  
A5

MISSED APPROACH:  
Climb to 3000 direct  
CRG VORTAC and hold.

D-ATIS <b>125.85</b>	JACKSONVILLE APP CON <b>119.0 269.9</b>	JACKSONVILLE TOWER <b>118.3 317.7</b>	GND CON <b>121.9 348.6</b>	CLNC DEL <b>119.5 290.275</b>	CPDLC
-------------------------	--	--	-------------------------------	----------------------------------	-------



VGSI and ILS glidepath not coincident (VGSI Angle 3.00/TCH 70).

GS 3.00° TCH 54

ORTAR CRG [24.5] RADAR

SONIA OM CRG [18.3] RADAR

KUYER CRG [14.7]

CRG [13.5]

2000

1700

480

1628

6.2 NM

3.6 NM

1.2 NM

3000

CRG

ELEV 30

TDZE 27

CATEGORY	A	B	C	D
S-ILS 14	306-¾ 279 (300-¾)			
S-LOC 14	480-¾ 453 (500-¾)		480-⅞ 453 (500-⅞)	
CIRCLING	520-1 490 (500-1)		580-1½ 550 (600-1½)	580-2 550 (600-2)
KUYER FIX MINIMUMS (DME REQUIRED)				
S-LOC 14	380-¾ 353 (400-¾)			
CIRCLING	520-1 490 (500-1)		580-1½ 550 (600-1½)	580-2 550 (600-2)

REIL Rwy 32  
TDZ/CL Rwys 8, 14, and 26  
HIRL Rwys 8-26 and 14-32  
FAF to MAP 4.8 NM

Knots	60	90	120	150	180
Min:Sec	4:48	3:12	2:24	1:55	1:36

SE-3, 10 JUL 2025 to 07 AUG 2025

SE-3, 10 JUL 2025 to 07 AUG 2025