

VORTAC CRG

114.5

Chan 92

APCH CRS

136°

Rwy Idg

7701

TDZE

27

Arpt Elev

30

[USAF]

JACKSONVILLE INTL (KJAX)

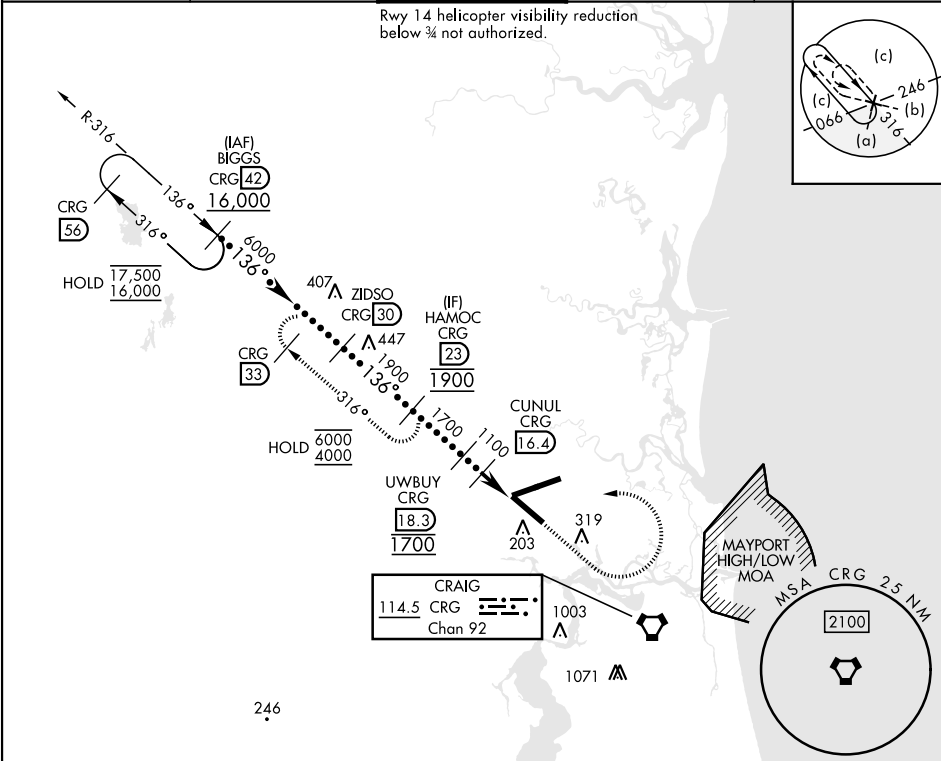
DME required. RADAR required for procedure entry.

MALS

A5

MISSED APPROACH: Climb to 2000 then climbing left turn to 4000 on CRG VORTAC R-316 to HAMOC 23 DME and hold.

ATIS 125.85	APP CON 119.0 269.9	TOWER 118.3 317.7	GND CON 121.9 348.6	CLNC DEL 119.5 290.275
----------------	------------------------	----------------------	------------------------	---------------------------



EMERG SAFE ALT 100 NM 2800 FROM CRG VORTAC

HAMOC CRG 23	VGSI and ILS glidepath not coincident. (VGSI angle 3.00/TCH 70).	2000	4000	HAMOC CRG 23
1900	1700	1100	1003	

UWBUEY CRG 18.3

CUNUL CRG 16.4

CRG 14.5

CRG 13.5

2.9 NM

CATEGORY	C	D	E
S-14*	400-¾	373 (400-¾)	
CIRCLING	580-1½ 550 (600-1½)	580-2 550 (600-2)	760-2½ 730 (800-2½)

ELEV 30

TDZE 27

136°

10,000 x 150

701 x 150

831 x 150

TWR 191

202

A5

A5

HIRL Rwy 8-26, 14-32
REIL Rwy 32
TDZL/CL Rwy 8, 14, 26