

## HI-ILS Z or LOC Z RWY 8

LOC I-JAX <b><u>110.7</u></b>	APCH CRS <b>077°</b>	Rwy Idg <b>10,000</b> TDZE <b>30</b> Arpt Elev <b>30</b>
----------------------------------	-------------------------	--

[USAF]

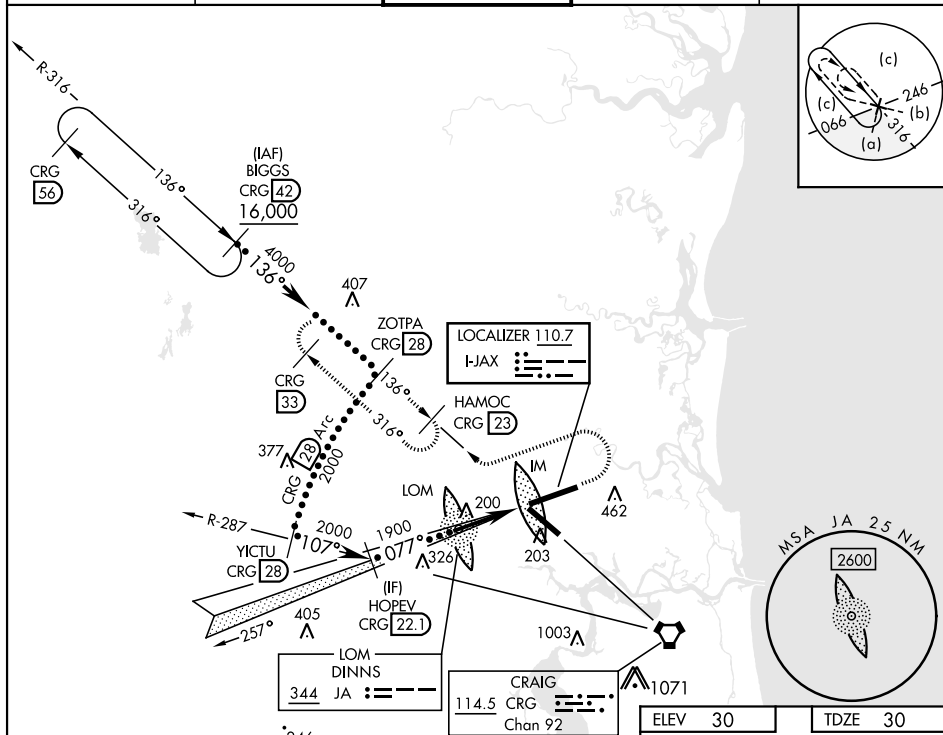
JACKSONVILLE INTL (KJAX)

DME required. RADAR required for procedure entry.

ALSF-2

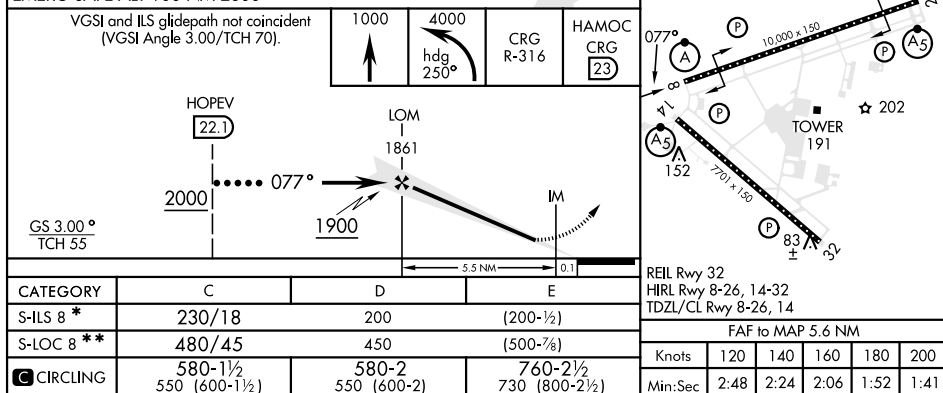
**MISSED APPROACH:** Climb to 1000 then climbing left turn to 4000 on heading 250° and on CRG R-316 to HAMOC/CRG 23 DME and hold, continue climb-in-hold to 4000.

ATIS 125.85	APP CON 119.0 269.9	TOWER 118.3 317.7	GND CON 121.9 348.6	CLNC DEL 119.5 290.275
----------------	------------------------	----------------------	------------------------	---------------------------



EMERG SAFE ALT 100 NM 2600

VGSI and ILS glidepath not coincident  
(VGSI Angle 3.00/TCH 70).



JACKSONVILLE, FLORIDA

30°30'N-81°41'W

JACKSONVILLE INTL (KJAX)

Amdt 6A 30NOV23

## HI-ILS Z or LOC Z RWY 8