

WAAS
CH **58030**
W14A

APP CRS
141°

Rwy Idg
TDZE **1034**
Apt Elev **1034**

RNAV (GPS) RWY 14

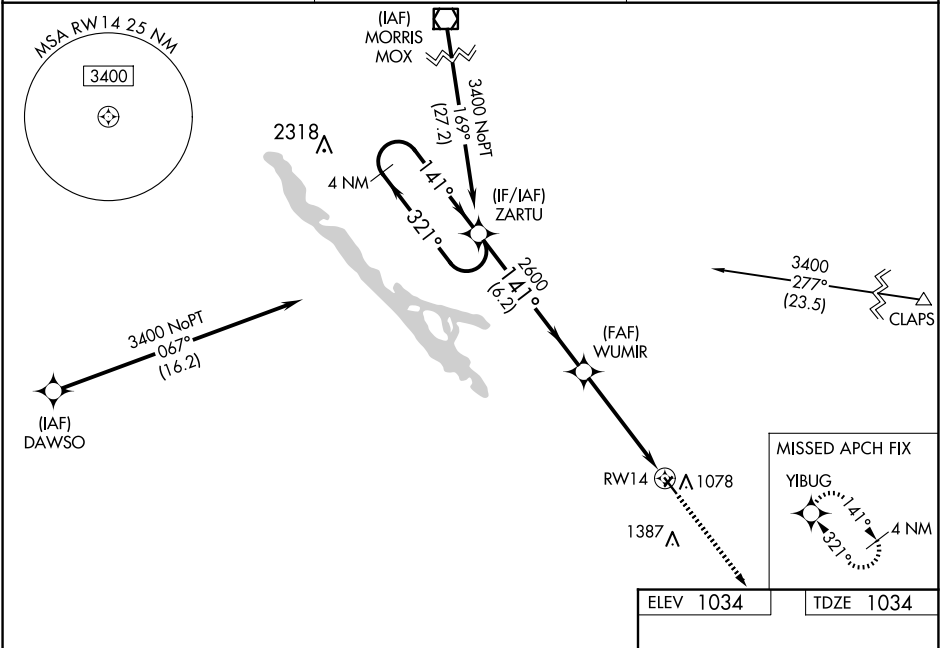
MONTEVIDEO-CHIPPEWA COUNTY (MVE)

V Baro-VNAV NA when using Granite Falls altimeter setting. For uncompensated Baro-VNAV systems, LNAV/VNAV NA below -30°C (-22°F) or above 54°C (130°F). When local altimeter setting not received, use Granite Falls altimeter setting and increase LPV DA to 1320 feet; increase LNAV/VNAV DA to 1320 feet; increase all MDAs 40 feet and LNAV visibility Cats C/D ½ SM and Circling visibility Cats C/D ¼ SM. DME/DME RNP-0.3 NA. Helicopter visibility reduction below 1 SM NA. When VGSI inop, Straight-in and Circling Rwy 14 procedures NA at night. Circling to Rwy 3-21 NA.

A

MISSED APPROACH:
Climb to 3300 direct YIBUG and hold.

AWOS-3PT 119.675	MINNEAPOLIS CENTER 125.5 323.1	UNICOM 122.8 (CTAF) 0
----------------------------	--	---------------------------------



VGSI and RNAV glidepath not coincident (VGSI Angle 3.00/TCH 25).

4 NM Holding Pattern
ZARTU
3400
321°
141°
GP 3.00°
TCH 45

WUMIR
2600
141°
2600
RW14

6.2 NM
4.8 NM

3300 YIBUG

CATEGORY	A	B	C	D
LPV DA		1284-1	250 (300-1)	
LNAV/VNAV DA		1284-1	250 (300-1)	
LNAV MDA	1520-1 486 (500-1)		1520-1¾ 486 (500-1¾)	
CIRCLING	1560-1 526 (600-1)		1700-1¾ 666 (700-1¾)	1700-2 666 (700-2)

REIL Rwy 14 and 32 0
MIRL Rwy 14-32 0

141°
21
0.8% UP
2361 X 165
3999 X 75
0.4% UP
32