

23166

RNAV (GPS) RWY 35  
BOWIE MUNI (0F2)

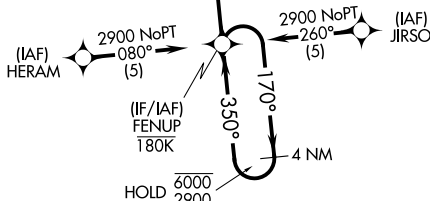
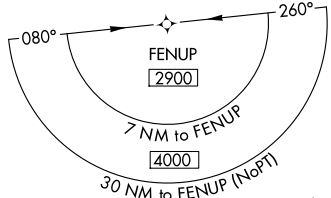
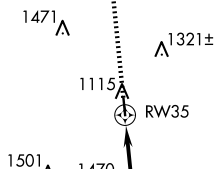
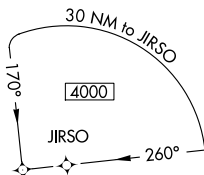
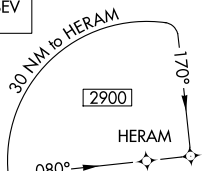
**T** For uncompensated Baro-VNAV systems, LNAV/VNAV NA below -17°C or above 54°C.

**MISSED APPROACH:** Climb to 2800 direct JABEV and hold.

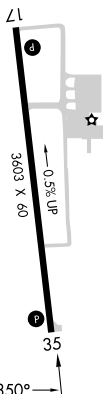
FORT WORTH CENTER  
127.95 322.325

UNICOM  
122.8 (CTAF) **L**

## MISSED APCH FIX



TDZE 1098



Amdt 2 19JUL18

33°36'N-97°47'W

BOWIE MUNI (ØF2)

RNAV (GPS) RWY 35

SC-2, 10 JUL 2025 to 07 AUG 2025

Figure 1 illustrates a 4 NM Holding Pattern. The pattern is defined by a 1.2 NM radius (RW35) and a 4.1 NM radius (CELPO). The pattern is divided into three segments: A (1.2 NM), B (4.1 NM), and C (6.1 NM). The pattern is labeled with '2800' and '2900' altitudes. The pattern is defined by a 1.2 NM radius (RW35) and a 4.1 NM radius (CELPO). The pattern is divided into three segments: A (1.2 NM), B (4.1 NM), and C (6.1 NM). The pattern is labeled with '2800' and '2900' altitudes.