

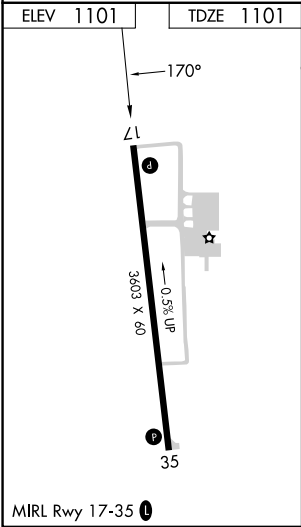
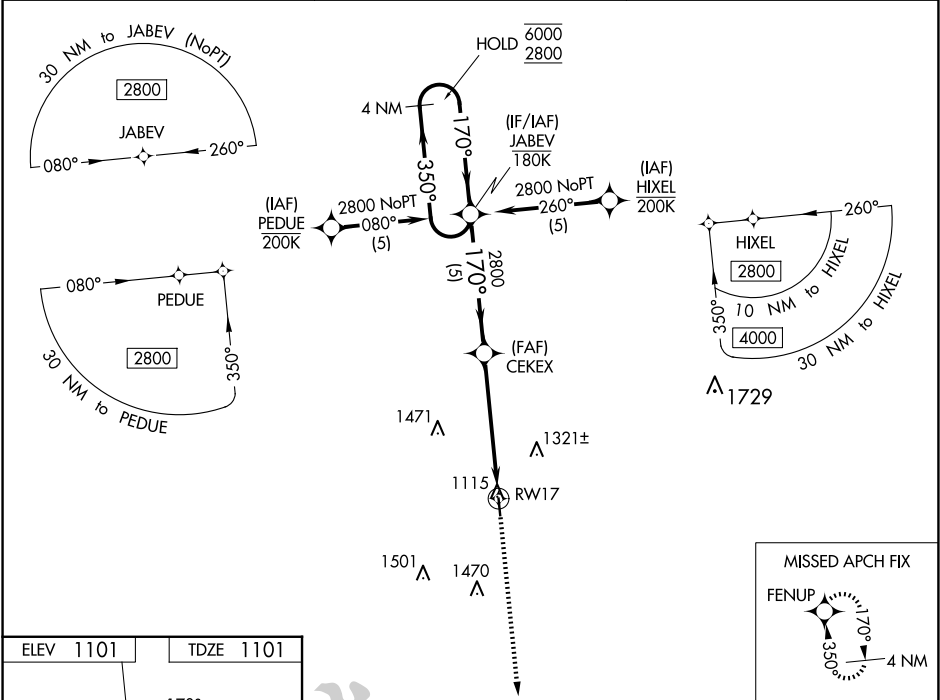
WAAS CH <b>99741</b> <b>W17A</b>	APP CRS <b>170°</b>	Rwy Idg TDZE <b>1101</b> Apt Elev <b>1101</b>	<b>3603</b>
--	------------------------	---	-------------

RNAV (GPS) RWY 17

BOWIE MUNI (ØF2)

RNP APCH	MISSED APPROACH: Climb to 3000 direct FENUP and hold.
<div><div>▼</div><div>▲</div></div> <div>Rwy 17 helicopter visibility reduction below 1 SM NA. For uncompensated Baro-VNAV systems, LNAV/VNAV NA below -17° C or above 54° C.</div>	

AWOS-3PT <b>118.75</b>	FORT WORTH CENTER <b>127.95 322.325</b>	UNICOM <b>122.8 (CTAF) 0</b>
---------------------------	--	---------------------------------



VGSi and RNAV glidepath not coincident (VGSi Angle 3.00/TCH 35).			
4 NM Holding Pattern			
JABEV			
CEKEX			
RW17			
GP 3.00° TCH 40			
5 NM			
5.2 NM			
CATEGORY	A	B	C
LPV DA	1351-1	250 (300-1)	NA
LNAV/VNAV DA	1546-1 <sup>3</sup> / <sub>8</sub>	445 (500-1 <sup>3</sup> / <sub>8</sub> )	NA
LNAV MDA	1640-1	539 (600-1)	1640-1 <sup>3</sup> / <sub>8</sub> 539 (600-1 <sup>3</sup> / <sub>8</sub> )
CIRCLING	1640-1 539 (600-1)	1680-1 579 (600-1)	1860-2 <sup>1</sup> / <sub>4</sub> 759 (800-2 <sup>1</sup> / <sub>4</sub> )

SC-2, 10 JUL 2025 to 07 AUG 2025

SC-2, 10 JUL 2025 to 07 AUG 2025